



MPP9 Monoclonal Antibody

Catalog No	BYmab-16752
Isotype	IgG
Reactivity	Human;Rat;Mouse;
Applications	WB
Gene Name	MPHOSPH9
Protein Name	M-phase phosphoprotein 9
Immunogen	The antiserum was produced against synthesized peptide derived from human MPHOSPH9. AA range:539-588
Specificity	MPP9 Monoclonal Antibody detects endogenous levels of MPP9 protein.
Formulation	Liquid in PBS containing 50% glycerol, 0.5% BSA and 0.02% sodium azide.
Source	Monoclonal, Mouse,IgG
Purification	The antibody was affinity-purified from mouse antiserum by affinity-chromatography using epitope-specific immunogen.
Dilution	WB 1:500-2000
Concentration	1 mg/ml
Purity	≥90%
Storage Stability	-20°C/1 year
Synonyms	MPHOSPH9; MPP9; M-phase phosphoprotein 9
Observed Band	78kD
Cell Pathway	Cytoplasm, cytoskeleton, microtubule organizing center, centrosome, centriole . Golgi apparatus membrane ; Peripheral membrane protein . Cytoplasm, cytoskeleton, microtubule organizing center, centrosome . Localizes to the distal and proximal end of centriole pairs in duplicated centrosomes. In ciliated cells, localizes to the distal and proximal end of daughter centriole and proximal of the mother centriole but not in the distal end of the mother centriole (PubMed:21399614). Recruited by KIF24 to the distal end of mother centriole where it forms a ring-like structure (PubMed:30375385). .
Tissue Specificity	Lymphoblast,Tongue,
Function	PTM:Phosphorylated in M (mitotic) phase.,
Background	PTM:Phosphorylated in M (mitotic) phase.,

Nanjing BYabscience technology Co.,Ltd



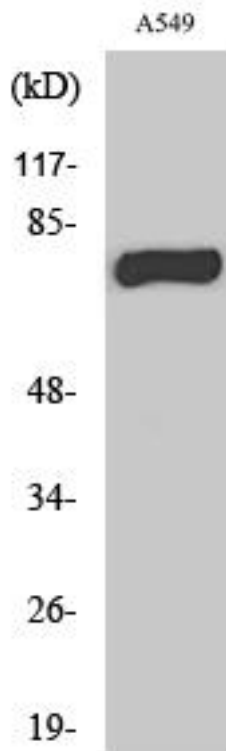
matters needing attention

Avoid repeated freezing and thawing!

Usage suggestions

This product can be used in immunological reaction related experiments. For more information, please consult technical personnel.

Products Images



Western Blot analysis of various cells using MPP9 Monoclonal Antibody