



# KKIALRE Monoclonal Antibody

Catalog No	BYmab-16744
Isotype	IgG
Reactivity	Human;Rat
Applications	WB
Gene Name	CDKL1
Protein Name	Cyclin-dependent kinase-like 1
Immunogen	The antiserum was produced against synthesized peptide derived from human CDKL1. AA range:281-330
Specificity	KKIALRE Monoclonal Antibody detects endogenous levels of KKIALRE protein.
Formulation	Liquid in PBS containing 50% glycerol, 0.5% BSA and 0.02% sodium azide.
Source	Monoclonal, Mouse,IgG
Purification	The antibody was affinity-purified from mouse antiserum by affinity-chromatography using epitope-specific immunogen.
Dilution	WB 1:500-2000
Concentration	1 mg/ml
Purity	≥90%
Storage Stability	-20°C/1 year
Synonyms	CDKL1; Cyclin-dependent kinase-like 1; Protein kinase p42 KKIALRE; Serine/threonine-protein kinase KKIALRE
Observed Band	42kD
Cell Pathway	Cytoplasm . Nucleus .
Tissue Specificity	Highly expressed in kidney, and to a lower extent in ovary.
Function	catalytic activity:ATP + a protein = ADP + a phosphoprotein.,domain:The [NKR]KIAxRE motif seems to be a cyclin-binding region.,similarity:Belongs to the protein kinase superfamily.,similarity:Belongs to the protein kinase superfamily. CMGC Ser/Thr protein kinase family. CDC2/CDKX subfamily.,similarity:Contains 1 protein kinase domain.,tissue specificity:Highly expressed in kidney, and to a lower extent in ovary.,
Background	This gene product is a member of a large family of CDC2-related serine/threonine protein kinases. It accumulates primarily in the nucleus. Two transcript variants encoding different isoforms have been found for this gene. [provided by RefSeq, Aug 2013],

Nanjing BYabscience technology Co.,Ltd



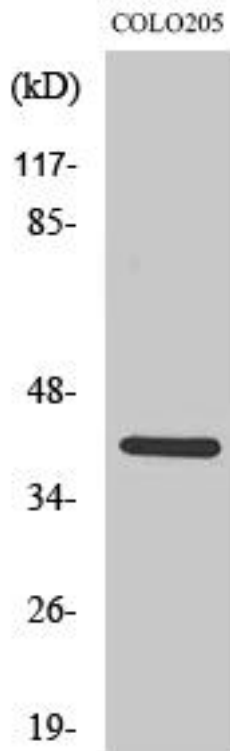
**matters needing attention**

Avoid repeated freezing and thawing!

**Usage suggestions**

This product can be used in immunological reaction related experiments. For more information, please consult technical personnel.

## Products Images



Western Blot analysis of various cells using KKIALRE Monoclonal Antibody