



# Hec1 Monoclonal Antibody

<b>Catalog No</b>	BYmab-16737
<b>Isotype</b>	IgG
<b>Reactivity</b>	Human;Mouse
<b>Applications</b>	WB
<b>Gene Name</b>	NDC80
<b>Protein Name</b>	Kinetochore protein NDC80 homolog
<b>Immunogen</b>	The antiserum was produced against synthesized peptide derived from human KNTC2. AA range:351-400
<b>Specificity</b>	Hec1 Monoclonal Antibody detects endogenous levels of Hec1 protein.
<b>Formulation</b>	Liquid in PBS containing 50% glycerol, 0.5% BSA and 0.02% sodium azide.
<b>Source</b>	Monoclonal, Mouse,IgG
<b>Purification</b>	The antibody was affinity-purified from mouse antiserum by affinity-chromatography using epitope-specific immunogen.
<b>Dilution</b>	WB 1:500-2000
<b>Concentration</b>	1 mg/ml
<b>Purity</b>	≥90%
<b>Storage Stability</b>	-20°C/1 year
<b>Synonyms</b>	NDC80; HEC; HEC1; KNTC2; Kinetochore protein NDC80 homolog; Highly expressed in cancer protein; Kinetochore protein Hec1; HsHec1; Kinetochore-associated protein 2; Retinoblastoma-associated protein HEC
<b>Observed Band</b>	73kD
<b>Cell Pathway</b>	Nucleus . Chromosome, centromere, kinetochore . Localizes to kinetochores from late prophase to anaphase (PubMed:14699129). Localizes specifically to the outer plate of the kinetochore (PubMed:14699129). .
<b>Tissue Specificity</b>	Bladder,Brain,Epithelium,Lymph,
<b>Function</b>	developmental stage:Expression peaks in mitosis.,function:Acts as a component of the essential kinetochore-associated NDC80 complex, which is required for chromosome segregation and spindle checkpoint activity. Required for kinetochore integrity and the organization of stable microtubule binding sites in the outer plate of the kinetochore.,PTM:Phosphorylation begins in S phase of the cell cycle and peaks in mitosis. Phosphorylated by NEK2. May also be phosphorylated by AURKA and AURKB.,similarity:Belongs to the NDC80/HEC1 family.,subcellular location:Localizes to kinetochores from late prophase to

**Nanjing BYabscience technology Co.,Ltd**



anaphase. Localizes specifically to the outer plate of the kinetochore.,subunit:Component of the NDC80 complex, which consists of NDC80/HEC1, CDCA1, SPBC24 and SPBC25. The NDC80 complex is formed by two subcomplexes composed of NDC80/HEC1-CDCA1 and SPBC24-SPBC25. Each subcomplex is formed by pa

#### Background

This gene encodes a component of the NDC80 kinetochore complex. The encoded protein consists of an N-terminal microtubule binding domain and a C-terminal coiled-coiled domain that interacts with other components of the complex. This protein functions to organize and stabilize microtubule-kinetochore interactions and is required for proper chromosome segregation. [provided by RefSeq, Oct 2011],

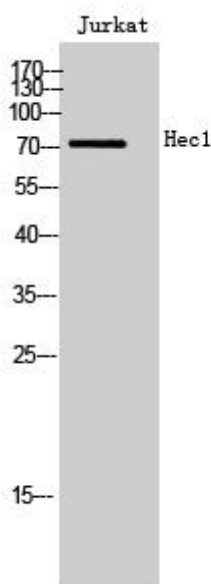
#### matters needing attention

Avoid repeated freezing and thawing!

#### Usage suggestions

This product can be used in immunological reaction related experiments. For more information, please consult technical personnel.

## Products Images



Western Blot analysis of various cells using Hec1 Monoclonal Antibody