



GANP Monoclonal Antibody

Catalog No	BYmab-16736
Isotype	IgG
Reactivity	Human;Mouse
Applications	WB
Gene Name	MCM3AP
Protein Name	80 kDa MCM3-associated protein
Immunogen	The antiserum was produced against synthesized peptide derived from human GANP. AA range:1841-1890
Specificity	GANP Monoclonal Antibody detects endogenous levels of GANP protein.
Formulation	Liquid in PBS containing 50% glycerol, 0.5% BSA and 0.02% sodium azide.
Source	Monoclonal, Mouse,IgG
Purification	The antibody was affinity-purified from mouse antiserum by affinity-chromatography using epitope-specific immunogen.
Dilution	WB 1:500-2000
Concentration	1 mg/ml
Purity	≥90%
Storage Stability	-20°C/1 year
Synonyms	MCM3AP; GANP; KIAA0572; MAP80; 80 kDa MCM3-associated protein; Protein GANP
Observed Band	218kD
Cell Pathway	[Isoform GANP]: Nucleus envelope . Nucleus, nuclear pore complex . Nucleus, nucleoplasm . Chromosome . Predominantly located at the nuclear envelope, facing the nucleus interior (PubMed:20005110, PubMed:21195085, PubMed:23591820). Localization at the nuclear pore complex requires NUP153, TPR and ALYREF/ALY (PubMed:23591820, PubMed:22307388). Also found associated with chromatin (PubMed:23652018). In B-cells, targeted to the immunoglobulin variable region genes (PubMed:23652018). . ; [Isoform MCM3AP]: Cytoplasm . Nucleus . Translocates into the nucleus in the presence of MCM3 (PubMed:12226073). Associates with chromatin possibly through interaction with MCM3 (PubMed:12226073). .
Tissue Specificity	Widely expressed (PubMed:11024281). Up-regulated in germinal center B-cells in tonsils (at protein level) (PubMed:11024281).
Function	function:May be involved in the nuclear localization pathway of MCM3.,similarity:Belongs to the SAC3 family.,subunit:Interacts with MCM3.,

Nanjing BYabscience technology Co.,Ltd



Background

The minichromosome maintenance protein 3 (MCM3) is one of the MCM proteins essential for the initiation of DNA replication. The protein encoded by this gene is a MCM3 binding protein. It was reported to have phosphorylation-dependent DNA-primase activity, which was up-regulated in antigen immunization induced germinal center. This protein was demonstrated to be an acetyltransferase that acetylates MCM3 and plays a role in DNA replication. The mutagenesis of a nuclear localization signal of MCM3 affects the binding of this protein with MCM3, suggesting that this protein may also facilitate MCM3 nuclear localization. This gene is expressed in the brain or in neuronal tissue. An allelic variant encoding amino acid Lys at 915, instead of conserved Glu, has been identified in patients with mild intellectual disability. [provided by RefSeq, Jan 2014],

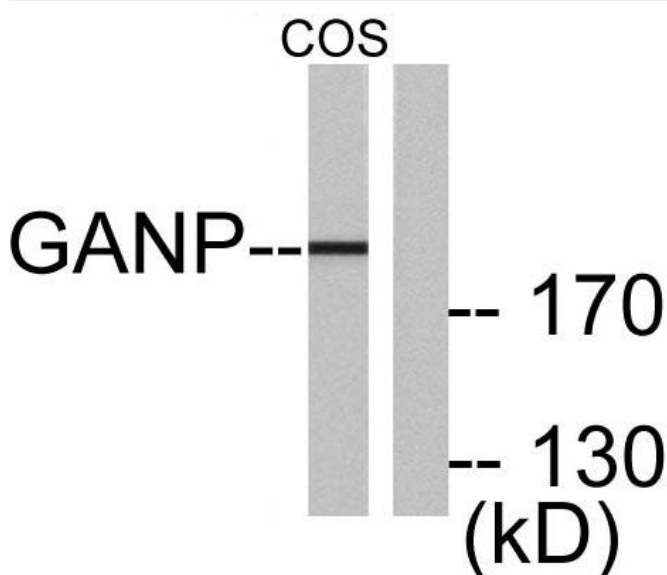
matters needing attention

Avoid repeated freezing and thawing!

Usage suggestions

This product can be used in immunological reaction related experiments. For more information, please consult technical personnel.

Products Images



Western Blot analysis of various cells using GANP Monoclonal Antibody