



Dbf4 Monoclonal Antibody

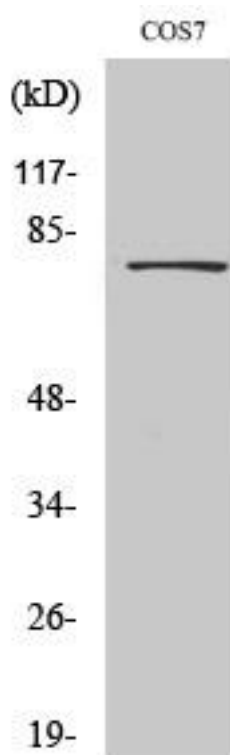
Catalog No	BYmab-16735
Isotype	IgG
Reactivity	Human;Mouse;Monkey
Applications	WB
Gene Name	DBF4
Protein Name	Protein DBF4 homolog A
Immunogen	The antiserum was produced against synthesized peptide derived from human DBF4. AA range:10-59
Specificity	Dbf4 Monoclonal Antibody detects endogenous levels of Dbf4 protein.
Formulation	Liquid in PBS containing 50% glycerol, 0.5% BSA and 0.02% sodium azide.
Source	Monoclonal, Mouse,IgG
Purification	The antibody was affinity-purified from mouse antiserum by affinity-chromatography using epitope-specific immunogen.
Dilution	WB 1:500-2000
Concentration	1 mg/ml
Purity	≥90%
Storage Stability	-20°C/1 year
Synonyms	DBF4; ASK; DBF4A; ZDBF1; Protein DBF4 homolog A; Activator of S phase kinase; Chiffon homolog A; DBF4-type zinc finger-containing protein 1
Observed Band	77kD
Cell Pathway	Nucleus .
Tissue Specificity	Highly expressed in testis and thymus. Expressed also in most cancer cells lines.
Function	function:Regulatory subunit for CDC7 which activates its kinase activity thereby playing a central role in DNA replication and cell proliferation. Required for progression of S phase. The complex CDC7-DBF4A selectively phosphorylates MCM2 subunit at 'Ser-40' and 'Ser-53' and then is involved in regulating the initiation of DNA replication during cell cycle.,induction:Induced in G1 phase at low level, increased during G1-S phase and remain high during S and G2-M phase.,PTM:Phosphorylated upon DNA damage, probably by ATM or ATR.,similarity:Contains 1 DBF4-type zinc finger.,similarity:Contains 2 BRCT domains.,subunit:Forms a complex with CDC7. Note that CDC7 forms distinct complex either with DBF4A or DBF4B. Such complexes are stable upon

Nanjing BYabscience technology Co.,Ltd



	replication stress. Interacts with MEN1, MCM2, ORC2L, ORC4L and ORC6L.,tissue specificity:Highly expressed in testis and thymus. Expressed also in most ca
Background	function:Regulatory subunit for CDC7 which activates its kinase activity thereby playing a central role in DNA replication and cell proliferation. Required for progression of S phase. The complex CDC7-DBF4A selectively phosphorylates MCM2 subunit at 'Ser-40' and 'Ser-53' and then is involved in regulating the initiation of DNA replication during cell cycle.,induction:Induced in G1 phase at low level, increased during G1-S phase and remain high during S and G2-M phase.,PTM:Phosphorylated upon DNA damage, probably by ATM or ATR.,similarity:Contains 1 DBF4-type zinc finger.,similarity:Contains 2 BRCT domains.,subunit:Forms a complex with CDC7. Note that CDC7 forms distinct complex either with DBF4A or DBF4B. Such complexes are stable upon replication stress. Interacts with MEN1, MCM2, ORC2L, ORC4L and ORC6L.,tissue specificity:Highly expressed in testis and thymus. Expressed also in most cancer cells lines.,
matters needing attention	Avoid repeated freezing and thawing!
Usage suggestions	This product can be used in immunological reaction related experiments. For more information, please consult technical personnel.

Products Images



Western Blot analysis of various cells using Dbf4 Monoclonal Antibody