



Cyclin D3 Monoclonal Antibody

Catalog No	BYmab-16727
Isotype	IgG
Reactivity	Human;Mouse;Rat;Monkey
Applications	WB
Gene Name	CCND3
Protein Name	G1/S-specific cyclin-D3
Immunogen	The antiserum was produced against synthesized peptide derived from human Cyclin D3. AA range:243-292
Specificity	Cyclin D3 Monoclonal Antibody detects endogenous levels of Cyclin D3 protein.
Formulation	Liquid in PBS containing 50% glycerol, 0.5% BSA and 0.02% sodium azide.
Source	Monoclonal, Mouse,IgG
Purification	The antibody was affinity-purified from mouse antiserum by affinity-chromatography using epitope-specific immunogen.
Dilution	WB 1:500-2000
Concentration	1 mg/ml
Purity	≥90%
Storage Stability	-20°C/1 year
Synonyms	CCND3; G1/S-specific cyclin-D3
Observed Band	32kD
Cell Pathway	Nucleus . Cytoplasm .
Tissue Specificity	Brain,Lung,Placenta,Synovial membrane tissue,Umbilical cord blood,
Function	function:Essential for the control of the cell cycle at the G1/S (start) transition. Potentiates the transcriptional activity of ATF5.,similarity:Belongs to the cyclin family.,similarity:Belongs to the cyclin family. Cyclin D subfamily.,subunit:Interacts with the CDK4 and CDK6 protein kinases to form a serine/threonine kinase holoenzyme complex. The cyclin subunit imparts substrate specificity to the complex. Interacts with ATF5. Interacts with EIF3K.,
Background	The protein encoded by this gene belongs to the highly conserved cyclin family, whose members are characterized by a dramatic periodicity in protein abundance through the cell cycle. Cyclins function as regulators of CDK kinases. Different cyclins exhibit distinct expression and degradation patterns which contribute to the

Nanjing BYabscience technology Co.,Ltd



temporal coordination of each mitotic event. This cyclin forms a complex with and functions as a regulatory subunit of CDK4 or CDK6, whose activity is required for cell cycle G1/S transition. This protein has been shown to interact with and be involved in the phosphorylation of tumor suppressor protein Rb. The CDK4 activity associated with this cyclin was reported to be necessary for cell cycle progression through G2 phase into mitosis after UV radiation. Several transcript variants encoding different isoforms have been found for this gene. [provided by RefSeq, Oct 2008],

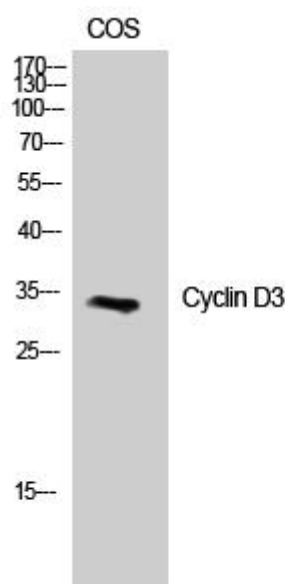
matters needing attention

Avoid repeated freezing and thawing!

Usage suggestions

This product can be used in immunological reaction related experiments. For more information, please consult technical personnel.

Products Images



Western Blot analysis of various cells using Cyclin D3 Monoclonal Antibody