



Creatine Kinase M Monoclonal Antibody

Catalog No	BYmab-16716
Isotype	IgG
Reactivity	Human;Mouse;Rat
Applications	WB
Gene Name	CKM
Protein Name	Creatine kinase M-type
Immunogen	The antiserum was produced against synthesized peptide derived from human M-CK. AA range:10-59
Specificity	Creatine Kinase M Monoclonal Antibody detects endogenous levels of Creatine Kinase M protein.
Formulation	Liquid in PBS containing 50% glycerol, 0.5% BSA and 0.02% sodium azide.
Source	Monoclonal, Mouse,IgG
Purification	The antibody was affinity-purified from mouse antiserum by affinity-chromatography using epitope-specific immunogen.
Dilution	WB 1:500-2000
Concentration	1 mg/ml
Purity	≥90%
Storage Stability	-20°C/1 year
Synonyms	CKM; CKMM; Creatine kinase M-type; Creatine kinase M chain; M-CK
Observed Band	43kD
Cell Pathway	Cytoplasm.
Tissue Specificity	Liver,
Function	catalytic activity:ATP + creatine = ADP + phosphocreatine.,function:Reversibly catalyzes the transfer of phosphate between ATP and various phosphogens (e.g. creatine phosphate). Creatine kinase isoenzymes play a central role in energy transduction in tissues with large, fluctuating energy demands, such as skeletal muscle, heart, brain and spermatozoa.,online information:CKM entry,online information:Creatine kinase entry,similarity:Belongs to the ATP:guanido phosphotransferase family.,subunit:Dimer of identical or non-identical chains. With MM being the major form in skeletal muscle and myocardium, MB existing in myocardium, and BB existing in many tissues, especially brain.,

Nanjing BYabscience technology Co.,Ltd

网址: www.njbybio.com

官方热线: 025-5229-8998

监督电话: 15950492658



Background

The protein encoded by this gene is a cytoplasmic enzyme involved in energy homeostasis and is an important serum marker for myocardial infarction. The encoded protein reversibly catalyzes the transfer of phosphate between ATP and various phosphogens such as creatine phosphate. It acts as a homodimer in striated muscle as well as in other tissues, and as a heterodimer with a similar brain isozyme in heart. The encoded protein is a member of the ATP:guanido phosphotransferase protein family. [provided by RefSeq, Jul 2008],

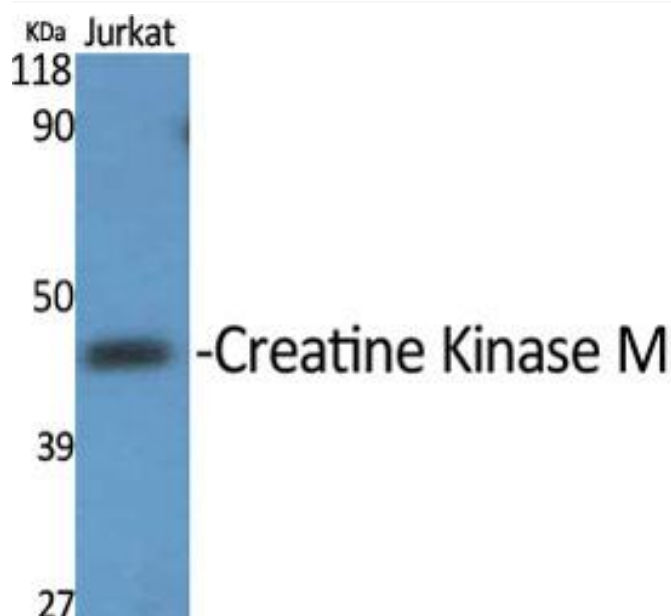
matters needing attention

Avoid repeated freezing and thawing!

Usage suggestions

This product can be used in immunological reaction related experiments. For more information, please consult technical personnel.

Products Images



Western Blot analysis of various cells using Creatine Kinase M Monoclonal Antibody