



CdkL4 Monoclonal Antibody

Catalog No	BYmab-16703
Isotype	IgG
Reactivity	Human;Rat;Mouse;
Applications	WB
Gene Name	CDKL4
Protein Name	Cyclin-dependent kinase-like 4
Immunogen	The antiserum was produced against synthesized peptide derived from human CDKL4. AA range:266-315
Specificity	CdkL4 Monoclonal Antibody detects endogenous levels of CdkL4 protein.
Formulation	Liquid in PBS containing 50% glycerol, 0.5% BSA and 0.02% sodium azide.
Source	Monoclonal, Mouse,IgG
Purification	The antibody was affinity-purified from mouse antiserum by affinity-chromatography using epitope-specific immunogen.
Dilution	WB 1:500-2000
Concentration	1 mg/ml
Purity	≥90%
Storage Stability	-20°C/1 year
Synonyms	CDKL4; Cyclin-dependent kinase-like 4
Observed Band	36kD
Cell Pathway	Cytoplasm .
Tissue Specificity	
Function	catalytic activity:ATP + a protein = ADP + a phosphoprotein.,domain:The [NKR]KIAxRE motif seems to be a cyclin-binding region.,similarity:Belongs to the protein kinase superfamily. CMGC Ser/Thr protein kinase family. CDC2/CDKX subfamily.,similarity:Contains 1 protein kinase domain.,
Background	catalytic activity:ATP + a protein = ADP + a phosphoprotein.,domain:The [NKR]KIAxRE motif seems to be a cyclin-binding region.,similarity:Belongs to the protein kinase superfamily. CMGC Ser/Thr protein kinase family. CDC2/CDKX subfamily.,similarity:Contains 1 protein kinase domain.,

Nanjing BYabscience technology Co.,Ltd



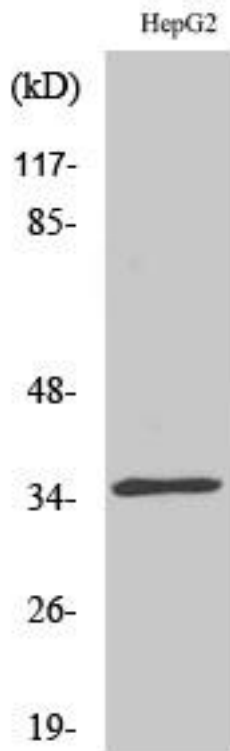
matters needing attention

Avoid repeated freezing and thawing!

Usage suggestions

This product can be used in immunological reaction related experiments. For more information, please consult technical personnel.

Products Images



Western Blot analysis of various cells using CdkL4 Monoclonal Antibody