



CdcA3 Monoclonal Antibody

Catalog No	BYmab-16692
Isotype	IgG
Reactivity	Human;Mouse;Rat
Applications	WB
Gene Name	CDCA3
Protein Name	Cell division cycle-associated protein 3
Immunogen	The antiserum was produced against synthesized peptide derived from human CDCA3. AA range:219-268
Specificity	CdcA3 Monoclonal Antibody detects endogenous levels of CdcA3 protein.
Formulation	Liquid in PBS containing 50% glycerol, 0.5% BSA and 0.02% sodium azide.
Source	Monoclonal, Mouse,IgG
Purification	The antibody was affinity-purified from mouse antiserum by affinity-chromatography using epitope-specific immunogen.
Dilution	WB 1:500-2000
Concentration	1 mg/ml
Purity	≥90%
Storage Stability	-20°C/1 year
Synonyms	CDCA3; C8; GRCC8; TOME1; Cell division cycle-associated protein 3; Gene-rich cluster protein C8; Trigger of mitotic entry protein 1; TOME-1
Observed Band	28kD
Cell Pathway	Cytoplasm, cytosol .
Tissue Specificity	Brain,Placenta,Testis,Thymus,
Function	domain:The KEN box is required for the association with the APC/C-Cdh1 complex.,function:F-box-like protein which is required for entry into mitosis. Acts by participating to E3 ligase complexes that mediate the ubiquitination and degradation of WEE1 kinase at G2/M phase.,pathway:Protein modification; protein ubiquitination.,PTM:Phosphorylated upon DNA damage, probably by ATM or ATR.,PTM:Ubiquitinated and degraded by the APC/C-Cdh1 complex.,subunit:Interacts with SKP1A. Part of a SCF (SKP1-cullin-F-box) protein ligase complex.,

Nanjing BYabscience technology Co.,Ltd

网址: www.njbybio.com

官方热线: 025-5229-8998

监督电话: 15950492658



Background

domain:The KEN box is required for the association with the APC/C-Cdh1 complex.,function:F-box-like protein which is required for entry into mitosis. Acts by participating to E3 ligase complexes that mediate the ubiquitination and degradation of WEE1 kinase at G2/M phase.,pathway:Protein modification; protein ubiquitination.,PTM:Phosphorylated upon DNA damage, probably by ATM or ATR.,PTM:Ubiquitinated and degraded by the APC/C-Cdh1 complex.,subunit:Interacts with SKP1A. Part of a SCF (SKP1-cullin-F-box) protein ligase complex.,

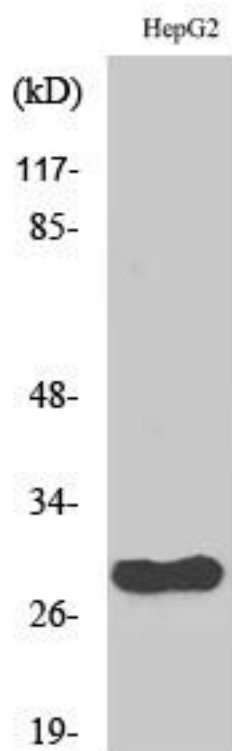
matters needing attention

Avoid repeated freezing and thawing!

Usage suggestions

This product can be used in immunological reaction related experiments. For more information, please consult technical personnel.

Products Images



Western Blot analysis of various cells using CdcA3 Monoclonal Antibody