



# CDC46 Monoclonal Antibody

Catalog No	BYmab-16686
Isotype	IgG
Reactivity	Human;Mouse;Rat
Applications	WB
Gene Name	MCM5
Protein Name	DNA replication licensing factor MCM5
Immunogen	The antiserum was produced against synthesized peptide derived from human MCM5. AA range:21-70
Specificity	CDC46 Monoclonal Antibody detects endogenous levels of CDC46 protein.
Formulation	Liquid in PBS containing 50% glycerol, 0.5% BSA and 0.02% sodium azide.
Source	Monoclonal, Mouse,IgG
Purification	The antibody was affinity-purified from mouse antiserum by affinity-chromatography using epitope-specific immunogen.
Dilution	WB 1:500-2000
Concentration	1 mg/ml
Purity	≥90%
Storage Stability	-20°C/1 year
Synonyms	MCM5; CDC46; DNA replication licensing factor MCM5; CDC46 homolog; P1-CDC46
Observed Band	90kD
Cell Pathway	Nucleus . Chromosome . Cytoplasm, cytosol . Associated with chromatin before the formation of nuclei and detaches from it as DNA replication progresses. .
Tissue Specificity	Cervix,Cervix carcinoma,Lymph,Placenta,Spleen,Thymus,Tongue
Function	similarity:Belongs to the MCM family.,similarity:Contains 1 MCM domain.,
Background	The protein encoded by this gene is structurally very similar to the CDC46 protein from <i>S. cerevisiae</i> , a protein involved in the initiation of DNA replication. The encoded protein is a member of the MCM family of chromatin-binding proteins and can interact with at least two other members of this family. The encoded protein is upregulated in the transition from the G0 to G1/S phase of the cell cycle and may actively participate in cell cycle regulation. [provided by RefSeq, Jul 2008],

Nanjing BYabscience technology Co.,Ltd



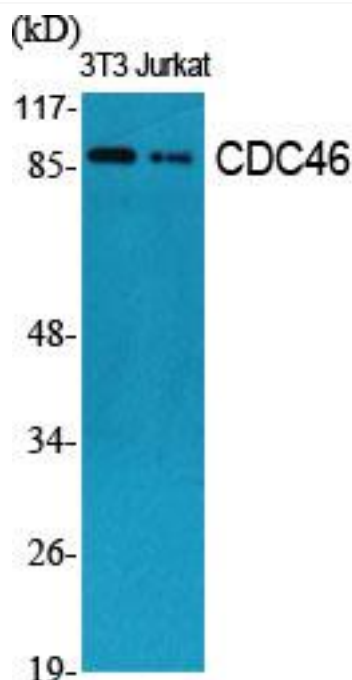
**matters needing attention**

Avoid repeated freezing and thawing!

**Usage suggestions**

This product can be used in immunological reaction related experiments. For more information, please consult technical personnel.

## Products Images



Western Blot analysis of various cells using CDC46 Monoclonal Antibody