



Cdc40 Monoclonal Antibody

Catalog No	BYmab-16685
Isotype	IgG
Reactivity	Human;Mouse;Rat
Applications	WB
Gene Name	CDC40
Protein Name	Pre-mRNA-processing factor 17
Immunogen	The antiserum was produced against synthesized peptide derived from human CDC40. AA range:179-228
Specificity	Cdc40 Monoclonal Antibody detects endogenous levels of Cdc40 protein.
Formulation	Liquid in PBS containing 50% glycerol, 0.5% BSA and 0.02% sodium azide.
Source	Monoclonal, Mouse,IgG
Purification	The antibody was affinity-purified from mouse antiserum by affinity-chromatography using epitope-specific immunogen.
Dilution	WB 1:500-2000
Concentration	1 mg/ml
Purity	≥90%
Storage Stability	-20°C/1 year
Synonyms	CDC40; EHB3; PRP17; PRPF17; Pre-mRNA-processing factor 17; Cell division cycle 40 homolog; EH-binding protein 3; Ehb3; PRP17 homolog; hPRP17
Observed Band	66kD
Cell Pathway	Nucleus . Nucleus speckle .
Tissue Specificity	Brain,Cervix carcinoma,Colon,Colon epithelium,Epithelium,Trachea,
Function	function:Associates with the spliceosome late in the splicing pathway and may function in the second step of pre-mRNA splicing.,similarity:Contains 7 WD repeats.,subunit:Identified in the spliceosome C complex, at least composed of AQR, ASCC3L1, C19orf29, CDC40, CDC5L, CRNKL1, DDX23, DDX41, DDX48, DDX5, DGCR14, DHX35, DHX38, DHX8, EFTUD2, FRG1, GPATC1, HNRPA1, HNRPA2B1, HNRPA3, HNRPC, HNRPF, HNRPH1, HNRPK, HNRPM, HNRPR, HNRPU, KIAA1160, KIAA1604, LSM2, LSM3, MAGOH, MORG1, MABPC1, PLRG1, PNN, PPIE, PPIL1, PPIL3, PPWD1, PRPF19, PRPF4B, PRPF6, PRPF8, RALY, RBM22, RBM8A, RBMX, SART1, SF3A1, SF3A2, SF3A3, SF3B1, SF3B2, SF3B3, SFRS1, SKIV2L2, SNRPA1, SNRPB, SNRPB2, SNRPD1, SNRPD2,

Nanjing BYabscience technology Co.,Ltd



SNRPD3, SNRPE, SNRPF, SNRPG, SNW1, SRRM1, SRRM2, SYF2, SYNCRIP, TFIP11, THOC4, U2AF1, WDR57, XAB2 and ZCCHC8.,

Background

Pre-mRNA splicing occurs in two sequential transesterification steps. The protein encoded by this gene is found to be essential for the catalytic step II in pre-mRNA splicing process. It is found in the spliceosome, and contains seven WD repeats, which function in protein-protein interactions. This protein has a sequence similarity to yeast Prp17 protein, which functions in two different cellular processes: pre-mRNA splicing and cell cycle progression. It suggests that this protein may play a role in cell cycle progression. [provided by RefSeq, Jul 2008],

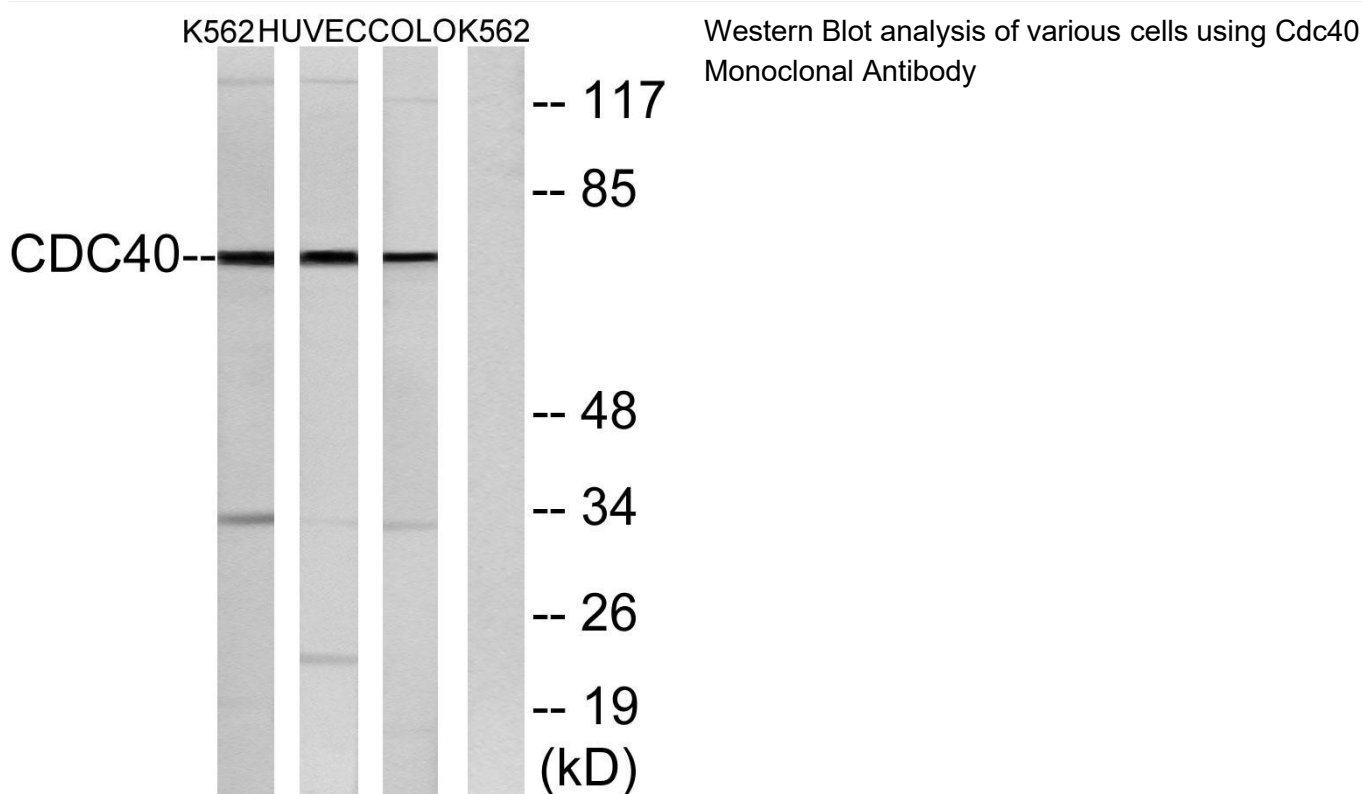
matters needing attention

Avoid repeated freezing and thawing!

Usage suggestions

This product can be used in immunological reaction related experiments. For more information, please consult technical personnel.

Products Images



Nanjing BYabs science technology Co.,Ltd