



# Cdc16 Monoclonal Antibody

<b>Catalog No</b>	BYmab-16673
<b>Isotype</b>	IgG
<b>Reactivity</b>	Human;Mouse;Rat
<b>Applications</b>	WB
<b>Gene Name</b>	CDC16
<b>Protein Name</b>	Cell division cycle protein 16 homolog
<b>Immunogen</b>	The antiserum was produced against synthesized peptide derived from human APC6. AA range:181-230
<b>Specificity</b>	Cdc16 Monoclonal Antibody detects endogenous levels of Cdc16 protein.
<b>Formulation</b>	Liquid in PBS containing 50% glycerol, 0.5% BSA and 0.02% sodium azide.
<b>Source</b>	Monoclonal, Mouse,IgG
<b>Purification</b>	The antibody was affinity-purified from mouse antiserum by affinity-chromatography using epitope-specific immunogen.
<b>Dilution</b>	WB 1:500-2000
<b>Concentration</b>	1 mg/ml
<b>Purity</b>	≥90%
<b>Storage Stability</b>	-20°C/1 year
<b>Synonyms</b>	CDC16; ANAPC6; Cell division cycle protein 16 homolog; Anaphase-promoting complex subunit 6; APC6; CDC16 homolog; CDC16Hs; Cyclosome subunit 6
<b>Observed Band</b>	72kD
<b>Cell Pathway</b>	Cytoplasm, cytoskeleton, microtubule organizing center, centrosome . Cytoplasm, cytoskeleton, spindle . Colocalizes with CDC27 to the centrosome at all stages of the cell cycle and to the mitotic spindle.
<b>Tissue Specificity</b>	Aorta endothelial cell,Brain,Epithelium,Lung,Skin,
<b>Function</b>	function:Component of the anaphase promoting complex/cyclosome (APC/C), a cell cycle-regulated ubiquitin ligase that controls progression through mitosis and the G1 phase of the cell cycle.,pathway:Protein modification; protein ubiquitination.,PTM:Phosphorylated. Phosphorylation on Ser-560 occurs specifically during mitosis.,similarity:Belongs to the APC6/CDC16 family.,similarity:Contains 7 TPR repeats.,subcellular location:Colocalizes with CDC27 to the centrosome at all stages of the cell cycle and to the mitotic spindle.,subunit:The APC/C is composed of at least 11 subunits. Interacts with PPP5C and CDC20.,

**Nanjing BYabscience technology Co.,Ltd**



## Background

The protein encoded by this gene functions as a protein ubiquitin ligase and is a component of the multiprotein APC complex. The APC complex is a cyclin degradation system that governs exit from mitosis by targeting cell cycle proteins for degradation by the 26S proteasome. Each component protein of the APC complex is highly conserved among eukaryotic organisms. This protein, and other APC complex proteins, contain a tetratricopeptide repeat (TPR) domain; a protein domain that is often involved in protein-protein interactions and the assembly of multiprotein complexes. Multiple alternatively spliced transcript variants, encoding distinct proteins, have been identified. [provided by RefSeq, Jan 2016],

## matters needing attention

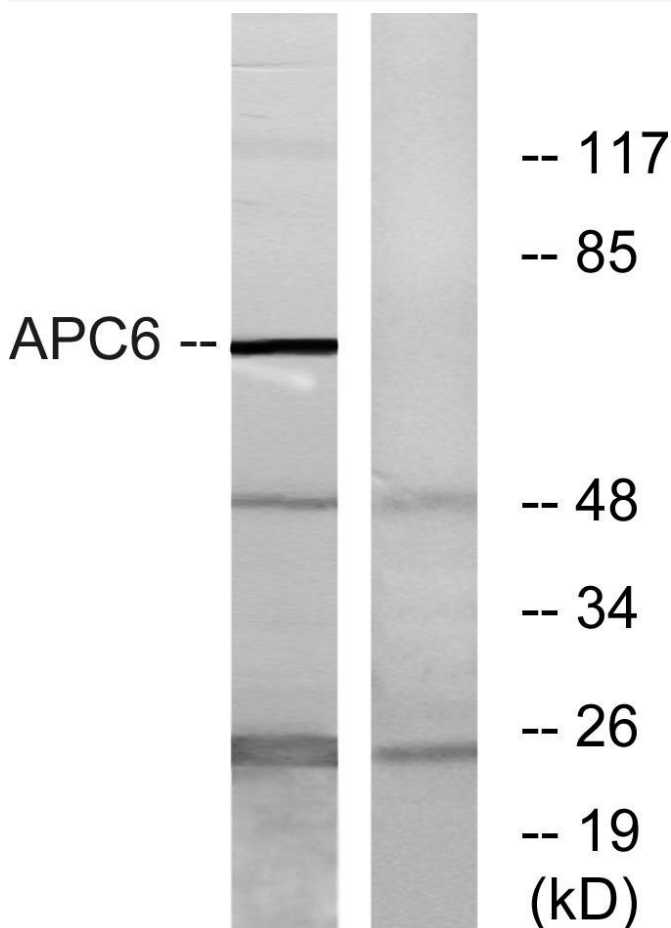
Avoid repeated freezing and thawing!

## Usage suggestions

This product can be used in immunological reaction related experiments. For more information, please consult technical personnel.

## Products Images

Western Blot analysis of various cells using Cdc16 Monoclonal Antibody



Nanjing BYabs science technology Co.,Ltd

网址: [www.njbybio.com](http://www.njbybio.com)

官方热线: 025-5229-8998

监督电话: 15950492658