



CCRK Monoclonal Antibody

Catalog No	BYmab-16671
Isotype	IgG
Reactivity	Human;Mouse;Rat
Applications	WB
Gene Name	CDK20
Protein Name	Cyclin-dependent kinase 20
Immunogen	The antiserum was produced against synthesized peptide derived from human CCRK. AA range:31-80
Specificity	CCRK Monoclonal Antibody detects endogenous levels of CCRK protein.
Formulation	Liquid in PBS containing 50% glycerol, 0.5% BSA and 0.02% sodium azide.
Source	Monoclonal, Mouse,IgG
Purification	The antibody was affinity-purified from mouse antiserum by affinity-chromatography using epitope-specific immunogen.
Dilution	WB 1:500-2000
Concentration	1 mg/ml
Purity	≥90%
Storage Stability	-20°C/1 year
Synonyms	CDK20; CCRK; CDCH; Cyclin-dependent kinase 20; CDK-activating kinase p42; CAK-kinase p42; Cell cycle-related kinase; Cell division protein kinase 20; Cyclin-dependent protein kinase H; Cyclin-kinase-activating kinase p42
Observed Band	39kD
Cell Pathway	Nucleus . Cytoplasm . Cell projection, cilium .
Tissue Specificity	
Function	similarity:Belongs to the protein kinase superfamily.,
Background	The protein encoded by this gene contains a kinase domain most closely related to the cyclin-dependent protein kinases. The encoded kinase may activate cyclin-dependent kinase 2 and is involved in cell growth. Alternatively spliced transcript variants encoding distinct isoforms have been reported. [provided by RefSeq, Dec 2009],

Nanjing BYabscience technology Co.,Ltd



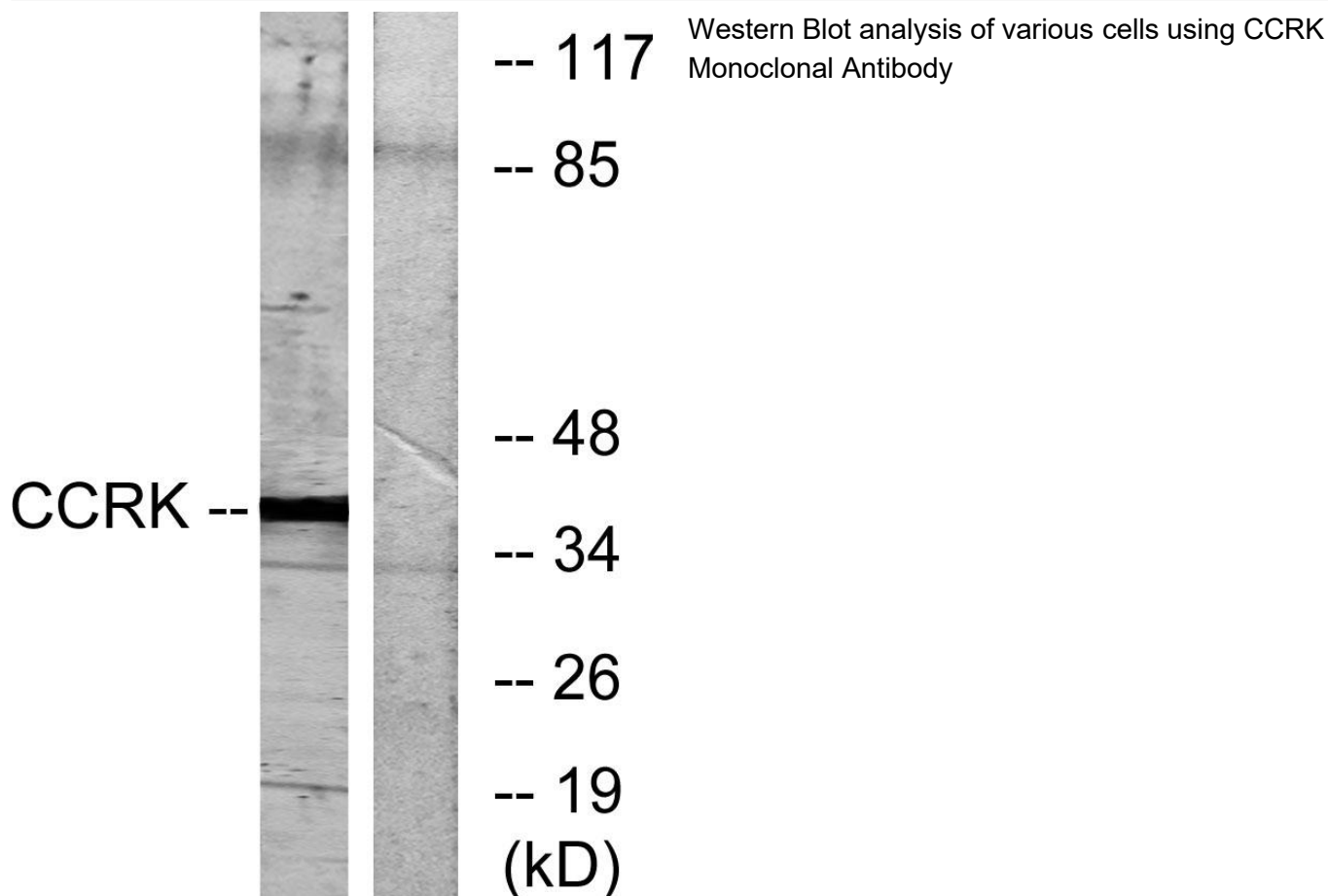
matters needing attention

Avoid repeated freezing and thawing!

Usage suggestions

This product can be used in immunological reaction related experiments. For more information, please consult technical personnel.

Products Images



Nanjing BYabscience technology Co.,Ltd

网址: www.njbybio.com

官方热线: 025-5229-8998

监督电话: 15950492658