



BRWD3 Monoclonal Antibody

Catalog No	BYmab-16666
Isotype	IgG
Reactivity	Human;Mouse
Applications	WB
Gene Name	BRWD3
Protein Name	Bromodomain and WD repeat-containing protein 3
Immunogen	The antiserum was produced against synthesized peptide derived from human BRWD3. AA range:1751-1800
Specificity	BRWD3 Monoclonal Antibody detects endogenous levels of BRWD3 protein.
Formulation	Liquid in PBS containing 50% glycerol, 0.5% BSA and 0.02% sodium azide.
Source	Monoclonal, Mouse,IgG
Purification	The antibody was affinity-purified from mouse antiserum by affinity-chromatography using epitope-specific immunogen.
Dilution	WB 1:500-2000
Concentration	1 mg/ml
Purity	≥90%
Storage Stability	-20°C/1 year
Synonyms	BRWD3; Bromodomain and WD repeat-containing protein 3
Observed Band	204kD
Cell Pathway	nucleus,
Tissue Specificity	Found in most adult tissues. Down-regulated in a majority of the B-CLL cases examined.
Function	caution:The translocation involving this gene was originally published as t(X;11)(q13;q23) (PubMed:15543602), but BRWD3 is localized to Xq21 and not to Xq13.,developmental stage:Expressed in fetal liver.,disease:A chromosomal aberration involving BRWD3 can be found in patients with B-cell chronic lymphocytic leukemia (B-CLL). Translocation t(X;11)(q21;q23) with ARHGAP20 does not result in fusion transcripts but disrupts both genes.,disease:Defects in BRWD3 are the cause of mental retardation X-linked type 93 (MRX93) [MIM:300659]; also known as mental retardation X-linked with macrocephaly. Mental retardation is characterized by significantly sub-average general intellectual functioning associated with impairments in adaptative behavior and manifested during the developmental period. Mentally retarded individuals are at

Nanjing BYabscience technology Co.,Ltd



least twice as likely to have macrocephaly than are their intellectual

Background

The protein encoded by this gene contains a bromodomain and several WD repeats. It is thought to have a chromatin-modifying function, and may thus play a role in transcription. Mutations in this gene cause mental retardation X-linked type 93, which is also referred to as mental retardation X-linked with macrocephaly. This gene is also associated with translocations in patients with B-cell chronic lymphocytic leukemia. [provided by RefSeq, May 2010],

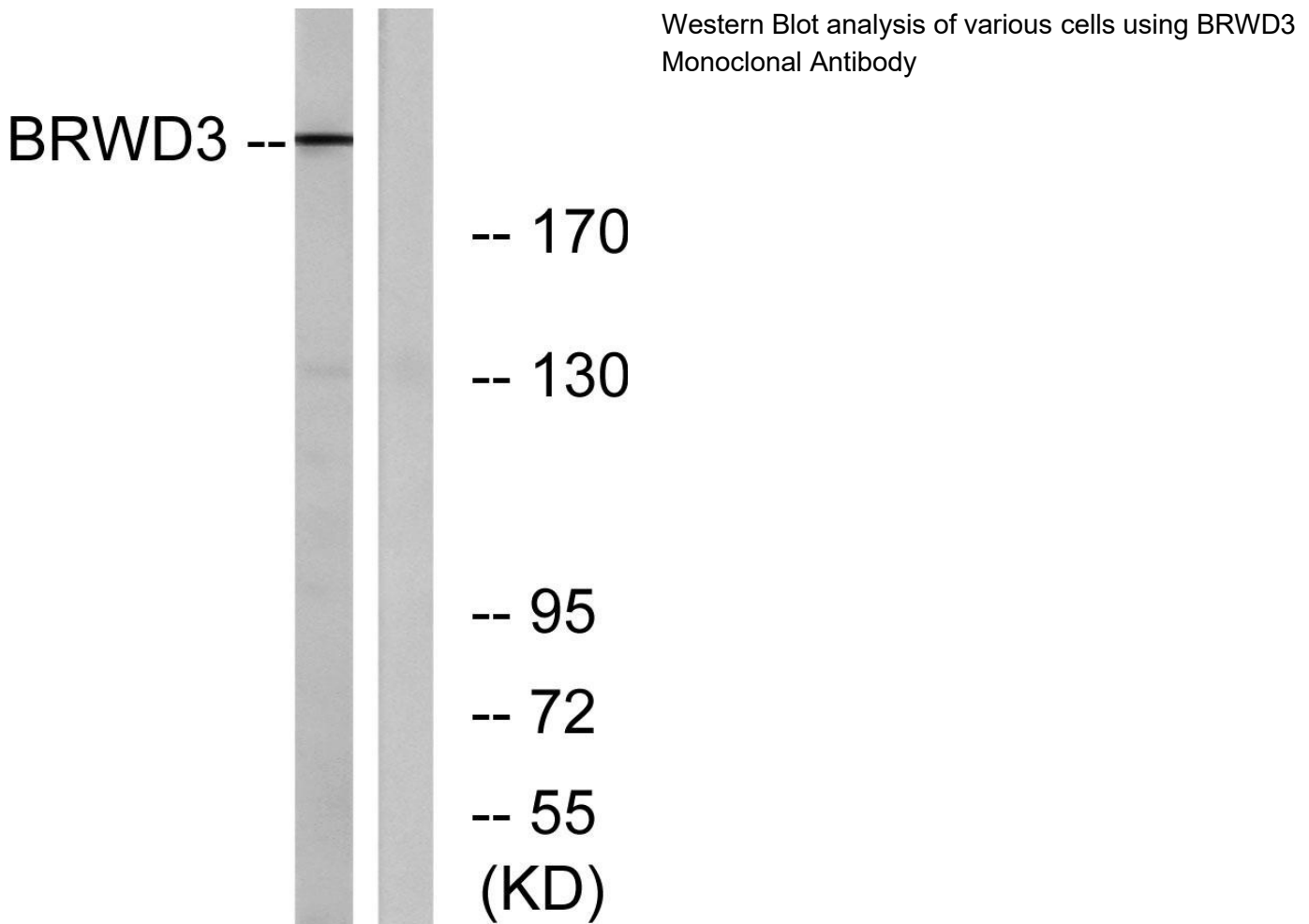
matters needing attention

Avoid repeated freezing and thawing!

Usage suggestions

This product can be used in immunological reaction related experiments. For more information, please consult technical personnel.

Products Images



Nanjing BYabscience technology Co.,Ltd