



NIPA (phospho Ser354) Monoclonal Antibody

Catalog No	BYmab-16607
Isotype	IgG
Reactivity	Human;Mouse;Rat;Monkey
Applications	WB
Gene Name	ZC3HC1
Protein Name	Nuclear-interacting partner of ALK
Immunogen	The antiserum was produced against synthesized peptide derived from human NIPA around the phosphorylation site of Ser354. AA range:320-369
Specificity	Phospho-NIPA (S354) Monoclonal Antibody detects endogenous levels of NIPA protein only when phosphorylated at S354.
Formulation	Liquid in PBS containing 50% glycerol, 0.5% BSA and 0.02% sodium azide.
Source	Monoclonal, Mouse,IgG
Purification	The antibody was affinity-purified from mouse antiserum by affinity-chromatography using epitope-specific immunogen.
Dilution	WB 1:500-2000
Concentration	1 mg/ml
Purity	≥90%
Storage Stability	-20°C/1 year
Synonyms	ZC3HC1; NIPA; HSPC216; Nuclear-interacting partner of ALK; Nuclear-interacting partner of anaplastic lymphoma kinase; hNIPA; Zinc finger C3HC-type protein 1
Observed Band	55kD
Cell Pathway	Nucleus .
Tissue Specificity	Widely expressed. Highly expressed in heart, skeletal muscle and testis. Expressed in brain, placenta, lung, kidney, liver, pancreas, spleen, thymus, prostate, ovary small intestine and colon. Weakly or not expressed in leukocytes.
Function	caution:Reported to contain a F-box domain (PubMed:16009132). Such domain is however not predicted by any detection method.,developmental stage:Weakly expressed in G0/G1 phases, abundant during S and G2/M phases, and strongly decreases thereafter.,domain:The F-box-like region is required for the interaction with SKP1A.,function:Essential component of an SCF-type E3 ligase complex, SCF(NIPA), a complex that controls mitotic entry by mediating ubiquitination and subsequent degradation of cyclin B1 (CCNB1). Its cell-cycle-dependent

Nanjing BYabscience technology Co.,Ltd



phosphorylation regulates the assembly of the SCF(NIPA) complex, restricting CCNB1 ubiquitination activity to interphase. Its inactivation results in nuclear accumulation of CCNB1 in interphase and premature mitotic entry. May have an antiapoptotic role in NPM-ALK-mediated signaling events.,pathway:Protein modification; protein ubiquitination.,PTM:Phosphorylated.

Background

This gene encodes an F-box-containing protein that is a component of an SCF-type E3 ubiquitin ligase complex that regulates the onset of cell division. The G2/M transition in the cell cycle requires the interaction of the proteins cyclin B1 and cyclin-dependent kinase 1. The activated ubiquitin ligase complex targets the protein cyclin B1 for degradation, preventing this transition to mitosis. [provided by RefSeq, Aug 2013],

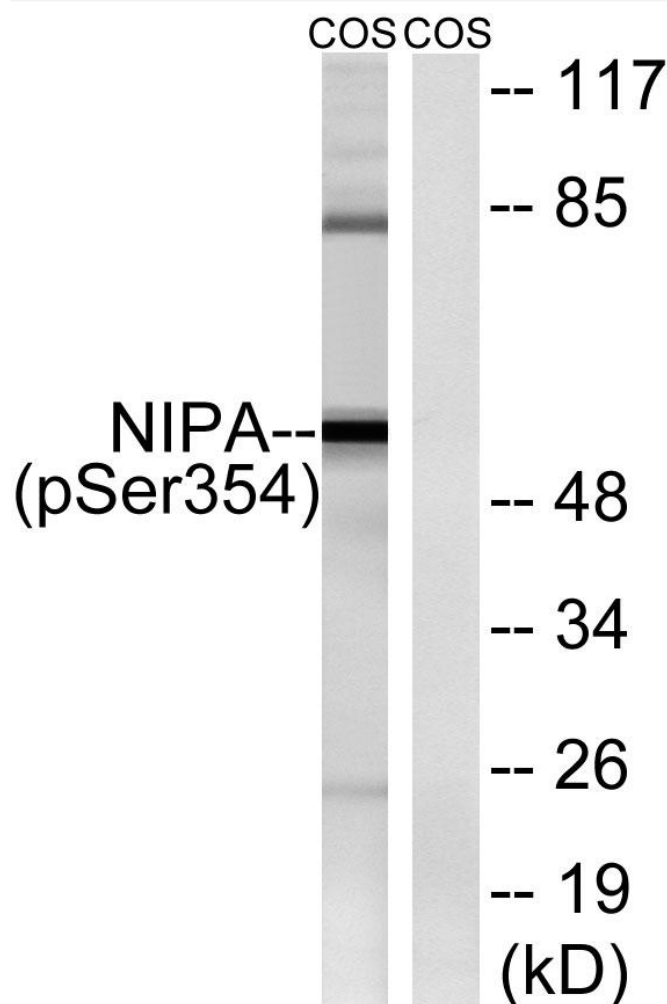
matters needing attention

Avoid repeated freezing and thawing!

Usage suggestions

This product can be used in immunological reaction related experiments. For more information, please consult technical personnel.

Products Images



Western Blot analysis of various cells using NIPA (phospho Ser354) Monoclonal Antibody

Nanjing BYabs science technology Co.,Ltd