



ATRIP (phospho Ser68) Monoclonal Antibody

Catalog No	BYmab-16600
Isotype	IgG
Reactivity	Human;Mouse;Rat
Applications	WB
Gene Name	ATRIP
Protein Name	ATR-interacting protein
Immunogen	The antiserum was produced against synthesized peptide derived from human ATRIP around the phosphorylation site of Ser68. AA range:34-83
Specificity	Phospho-ATRIP (S68) Monoclonal Antibody detects endogenous levels of ATRIP protein only when phosphorylated at S68.
Formulation	Liquid in PBS containing 50% glycerol, 0.5% BSA and 0.02% sodium azide.
Source	Monoclonal, Mouse,IgG
Purification	The antibody was affinity-purified from mouse antiserum by affinity-chromatography using epitope-specific immunogen.
Dilution	WB 1:500-2000
Concentration	1 mg/ml
Purity	≥90%
Storage Stability	-20°C/1 year
Synonyms	ATRIP; AGS1; ATR-interacting protein; ATM and Rad3-related-interacting protein
Observed Band	80kD
Cell Pathway	Nucleus . Redistributes to discrete nuclear foci upon DNA damage.
Tissue Specificity	Ubiquitous.
Function	caution:The gene for this protein is either identical to or adjacent to that of TREX1. Some of the mRNAs that encode ATRIP also encode TREX1 in another reading frame.,domain:The EEXXXDDL motif is required for the interaction with catalytic subunit PRKDC and its recruitment to sites of DNA damage.,function:Required for checkpoint signaling after DNA damage. Required for ATR expression, possibly by stabilizing the protein.,PTM:Phosphorylated by ATR.,sequence caution:Translation N-terminally extended.,similarity:Belongs to the ATRIP family.,subcellular location:Redistributes to discrete nuclear foci upon DNA damage.,subunit:Heterodimer with ATR. The heterodimer binds the RPA complex and is then recruited to single stranded DNA. Interacts with CEP164 (via N-terminus).,tissue specificity:Ubiquitous.,

Nanjing BYabscience technology Co.,Ltd



Background

This gene encodes an essential component of the DNA damage checkpoint. The encoded protein binds to single-stranded DNA coated with replication protein A. The protein also interacts with the ataxia telangiectasia and Rad3 related protein kinase, resulting in its accumulation at intranuclear foci induced by DNA damage. Multiple transcript variants encoding different isoforms have been found for this gene. [provided by RefSeq, Aug 2012],

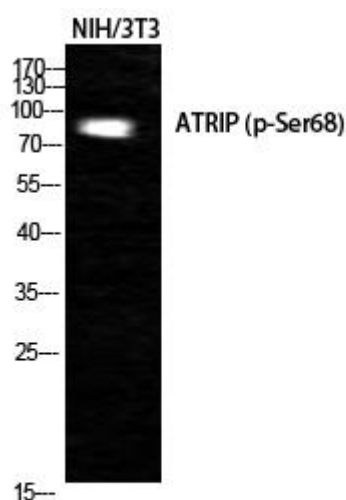
matters needing attention

Avoid repeated freezing and thawing!

Usage suggestions

This product can be used in immunological reaction related experiments. For more information, please consult technical personnel.

Products Images



Western Blot analysis of various cells using ATRIP (phospho Ser68) Monoclonal Antibody