



NHERF-2 Monoclonal Antibody

| | |
|--------------------|---|
| Catalog No | BYmab-16531 |
| Isotype | IgG |
| Reactivity | Human;Mouse;Rat |
| Applications | WB |
| Gene Name | SLC9A3R2 |
| Protein Name | Na(+)/H(+) exchange regulatory cofactor NHE-RF2 |
| Immunogen | Synthesized peptide derived from NHERF-2 . at AA range: 20-100 |
| Specificity | NHERF-2 Monoclonal Antibody detects endogenous levels of NHERF-2 protein. |
| Formulation | Liquid in PBS containing 50% glycerol, 0.5% BSA and 0.02% sodium azide. |
| Source | Monoclonal, Mouse,IgG |
| Purification | The antibody was affinity-purified from mouse antiserum by affinity-chromatography using epitope-specific immunogen. |
| Dilution | WB 1:500-2000 |
| Concentration | 1 mg/ml |
| Purity | ≥90% |
| Storage Stability | -20°C/1 year |
| Synonyms | SLC9A3R2; NHERF2; Na(+)/H(+) exchange regulatory cofactor NHE-RF2; NHERF-2; NHE3 kinase A regulatory protein E3KARP; SRY-interacting protein 1; SIP-1; Sodium-hydrogen exchanger regulatory factor 2; Solute carrier family 9 isoform A3 regulatory factor 2; Tyrosine kinase activator protein 1; TKA-1 |
| Observed Band | 37kD |
| Cell Pathway | Endomembrane system ; Peripheral membrane protein . Nucleus . Apical cell membrane . Localizes with EZR and PODXL at the apical cell membrane of glomerular epithelium cells and the sides of the food processes (By similarity). Nuclear, in a punctate pattern. . |
| Tissue Specificity | Widely expressed. |
| Function | function:Scaffold protein that connects plasma membrane proteins with members of the ezrin/moesin/radixin family and thereby helps to link them to the actin cytoskeleton and to regulate their surface expression. Necessary for cAMP-mediated phosphorylation and inhibition of SLC9A3. May also act as scaffold protein in the nucleus.,similarity:Contains 2 PDZ (DHR) domains.,subcellular location:Nuclear, in a punctate pattern.,subunit:Homodimer, |

Nanjing BYabscience technology Co.,Ltd



and heterodimer with SLC9A3R1. Binds PODXL and PDZK1 (By similarity). Binds ADRB2, SLC9A3, P2RY1, P2YR2, SRY, RDX and LPAR2.,tissue specificity:Widely expressed.,

Background

This gene encodes a member of the NHERF family of PDZ scaffolding proteins. These proteins mediate many cellular processes by binding to and regulating the membrane expression and protein-protein interactions of membrane receptors and transport proteins. The encoded protein plays a role in intestinal sodium absorption by regulating the activity of the sodium/hydrogen exchanger 3, and may also regulate the cystic fibrosis transmembrane regulator (CFTR) ion channel. Alternatively spliced transcript variants encoding multiple isoforms have been observed for this gene. [provided by RefSeq, Nov 2011],

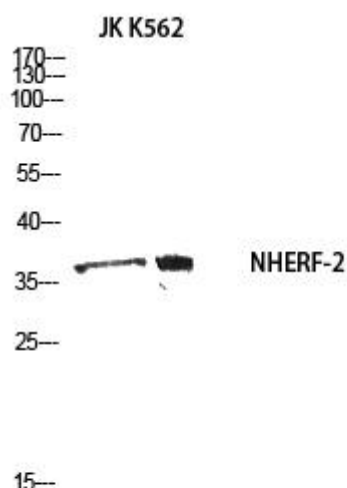
matters needing attention

Avoid repeated freezing and thawing!

Usage suggestions

This product can be used in immunological reaction related experiments. For more information, please consult technical personnel.

Products Images



Western Blot analysis of various cells using NHERF-2 Monoclonal Antibody