



P2X3 Monoclonal Antibody

Catalog No	BYmab-16524
Isotype	IgG
Reactivity	Human;Mouse;Rat
Applications	WB
Gene Name	P2RX3
Protein Name	P2X purinoceptor 3
Immunogen	The antiserum was produced against synthesized peptide derived from the Internal region of human P2RX3. AA range:81-130
Specificity	P2X3 Monoclonal Antibody detects endogenous levels of P2X3 protein.
Formulation	Liquid in PBS containing 50% glycerol, 0.5% BSA and 0.02% sodium azide.
Source	Monoclonal, Mouse,IgG
Purification	The antibody was affinity-purified from mouse antiserum by affinity-chromatography using epitope-specific immunogen.
Dilution	WB 1:500-2000
Concentration	1 mg/ml
Purity	≥90%
Storage Stability	-20°C/1 year
Synonyms	P2RX3; P2X purinoceptor 3; P2X3; ATP receptor; Purinergic receptor
Observed Band	44kD
Cell Pathway	Cell membrane ; Multi-pass membrane protein .
Tissue Specificity	Heart,
Function	function:Receptor for ATP that acts as a ligand gated ion channel.,online information:P2X receptor entry,similarity:Belongs to the P2X receptor family.,subunit:Homo- or heteropolymers.,
Background	The product of this gene belongs to the family of purinoceptors for ATP. This receptor functions as a ligand-gated ion channel and may transduce ATP-evoked nociceptor activation. Mouse studies suggest that this receptor is important for peripheral pain responses, and also participates in pathways controlling urinary bladder volume reflexes. It is possible that the development of selective antagonists for this receptor may have a therapeutic potential in pain relief and in the treatment of disorders of urine storage. [provided by RefSeq, Jul 2008],

Nanjing BYabscience technology Co.,Ltd



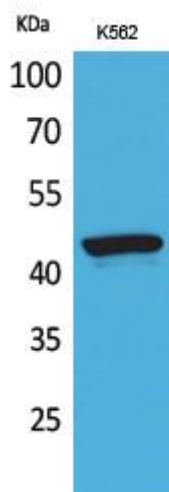
matters needing attention

Avoid repeated freezing and thawing!

Usage suggestions

This product can be used in immunological reaction related experiments. For more information, please consult technical personnel.

Products Images



Western Blot analysis of various cells using P2X3 Monoclonal Antibody