



TRPV3 Monoclonal Antibody

Catalog No	BYmab-16521
Isotype	IgG
Reactivity	Human;Mouse
Applications	WB
Gene Name	TRPV3
Protein Name	Transient receptor potential cation channel subfamily V member 3
Immunogen	Synthesized peptide derived from the Internal region of human TRPV3.
Specificity	TRPV3 Monoclonal Antibody detects endogenous levels of TRPV3 protein.
Formulation	Liquid in PBS containing 50% glycerol, 0.5% BSA and 0.02% sodium azide.
Source	Monoclonal, Mouse,IgG
Purification	The antibody was affinity-purified from mouse antiserum by affinity-chromatography using epitope-specific immunogen.
Dilution	WB 1:500-2000
Concentration	1 mg/ml
Purity	≥90%
Storage Stability	-20°C/1 year
Synonyms	TRPV3; Transient receptor potential cation channel subfamily V member 3; TrpV3; Vanilloid receptor-like 3; VRL-3
Observed Band	90kD
Cell Pathway	Membrane; Multi-pass membrane protein.
Tissue Specificity	Abundantly expressed in CNS. Widely expressed at low levels. Detected in dorsal root ganglion (at protein level). Expressed in the keratinocyte layers of the outer root sheath and, to lesser extent, to the matrix of the hair follicles (at protein level).
Function	function:Putative receptor-activated non-selective calcium permeant cation channel. It is activated by innocuous (warm) temperatures and shows an increased response at noxious temperatures greater than 39 degrees Celsius. Activation exhibits an outward rectification. May associate with TRPV1 and may modulate its activity.,similarity:Belongs to the transient receptor family. TrpV subfamily.,similarity:Contains 3 ANK repeats.,subunit:May form a heteromeric channel with TRPV1. Interacts with TRPV1.,tissue specificity:Abundantly expressed in CNS. Widely expressed at low levels. Detected in dorsal root ganglion (at protein level).,

Nanjing BYabscience technology Co.,Ltd



Background

transient receptor potential cation channel subfamily V member 3 (TRPV3) Homo sapiens This gene product belongs to a family of nonselective cation channels that function in a variety of processes, including temperature sensation and vasoregulation. The thermosensitive members of this family are expressed in subsets of sensory neurons that terminate in the skin, and are activated at distinct physiological temperatures. This channel is activated at temperatures between 22 and 40 degrees C. This gene lies in close proximity to another family member gene on chromosome 17, and the two encoded proteins are thought to associate with each other to form heteromeric channels. Multiple transcript variants encoding different isoforms have been found for this gene. [provided by RefSeq, Apr 2012],

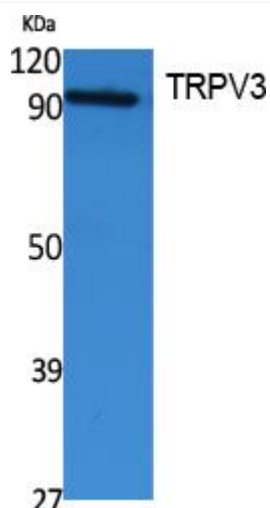
matters needing attention

Avoid repeated freezing and thawing!

Usage suggestions

This product can be used in immunological reaction related experiments. For more information, please consult technical personnel.

Products Images



Western Blot analysis of various cells using TRPV3 Monoclonal Antibody