



TWIK-3 Monoclonal Antibody

Catalog No	BYmab-16508
Isotype	IgG
Reactivity	Human;Rat;Mouse;
Applications	WB
Gene Name	KCNK7
Protein Name	Potassium channel subfamily K member 7
Immunogen	Synthesized peptide derived from TWIK-3 . at AA range: 170-250
Specificity	TWIK-3 Monoclonal Antibody detects endogenous levels of TWIK-3 protein.
Formulation	Liquid in PBS containing 50% glycerol, 0.5% BSA and 0.02% sodium azide.
Source	Monoclonal, Mouse,IgG
Purification	The antibody was affinity-purified from mouse antiserum by affinity-chromatography using epitope-specific immunogen.
Dilution	WB 1:500-2000
Concentration	1 mg/ml
Purity	≥90%
Storage Stability	-20°C/1 year
Synonyms	KCNK7; Potassium channel subfamily K member 7
Observed Band	32kD
Cell Pathway	Membrane ; Multi-pass membrane protein .
Tissue Specificity	Brain,PCR rescued clones,
Function	function:Probable potassium channel subunit. No channel activity observed in vitro as protein remains in the endoplasmic reticulum. May need to associate with an as yet unknown partner in order to reach the plasma membrane.,similarity:Belongs to the two pore domain potassium channel (TC 1.A.1.8) family.,subunit:Homodimer .,
Background	This gene encodes a member of the superfamily of potassium channel proteins containing two pore-forming P domains. The product of this gene has not been shown to be a functional channel; however, it may require other non-pore-forming proteins for activity. Multiple transcript variants encoding different isoforms have been found for this gene. [provided by RefSeq, Jul 2008],

Nanjing BYabscience technology Co.,Ltd



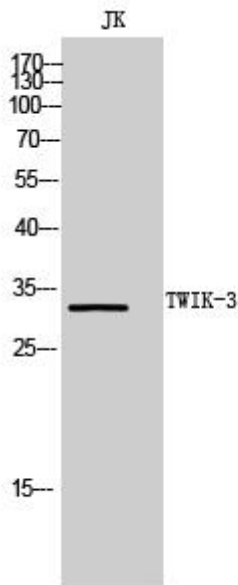
matters needing attention

Avoid repeated freezing and thawing!

Usage suggestions

This product can be used in immunological reaction related experiments. For more information, please consult technical personnel.

Products Images



Western Blot analysis of various cells using TWIK-3 Monoclonal Antibody