



# TWIK-2 Monoclonal Antibody

<b>Catalog No</b>	BYmab-16507
<b>Isotype</b>	IgG
<b>Reactivity</b>	Human;Rat;Mouse;
<b>Applications</b>	WB
<b>Gene Name</b>	KCNK6
<b>Protein Name</b>	Potassium channel subfamily K member 6
<b>Immunogen</b>	Synthesized peptide derived from TWIK-2 . at AA range: 240-320
<b>Specificity</b>	TWIK-2 Monoclonal Antibody detects endogenous levels of TWIK-2 protein.
<b>Formulation</b>	Liquid in PBS containing 50% glycerol, 0.5% BSA and 0.02% sodium azide.
<b>Source</b>	Monoclonal, Mouse,IgG
<b>Purification</b>	The antibody was affinity-purified from mouse antiserum by affinity-chromatography using epitope-specific immunogen.
<b>Dilution</b>	WB 1:500-2000
<b>Concentration</b>	1 mg/ml
<b>Purity</b>	≥90%
<b>Storage Stability</b>	-20°C/1 year
<b>Synonyms</b>	KCNK6; TOSS; TWIK2; Potassium channel subfamily K member 6; Inward rectifying potassium channel protein TWIK-2; TWIK-originated similarity sequence
<b>Observed Band</b>	33kD
<b>Cell Pathway</b>	Membrane ; Multi-pass membrane protein .
<b>Tissue Specificity</b>	Widespread expression, detected in all tissues tested except for skeletal muscle. Strongest expression in placenta, pancreas, heart, colon and spleen, lower levels detected in peripheral blood leukocytes, lung, liver, kidney and thymus. Lowest expression detected in brain.
<b>Function</b>	function:Exhibits outward rectification in a physiological K(+) gradient and mild inward rectification in symmetrical K(+) conditions.,miscellaneous:Inhibited by internal acidification and, to a small degree, by zinc. Not inhibited by quinine, quinidine or barium.,similarity:Belongs to the two pore domain potassium channel (TC 1.A.1.8) family.,subunit:Homodimer .,tissue specificity:Widespread expression, detected in all tissues tested except for skeletal muscle. Strongest expression in placenta, pancreas, heart, colon and spleen, lower levels detected in peripheral blood leukocytes, lung, liver, kidney and thymus. Lowest expression detected in brain.,

**Nanjing BYabscience technology Co.,Ltd**



### Background

This gene encodes one of the members of the superfamily of potassium channel proteins containing two pore-forming P domains. This channel protein, considered an open rectifier, is widely expressed. It is stimulated by arachidonic acid, and inhibited by internal acidification and volatile anaesthetics. [provided by RefSeq, Jul 2008],

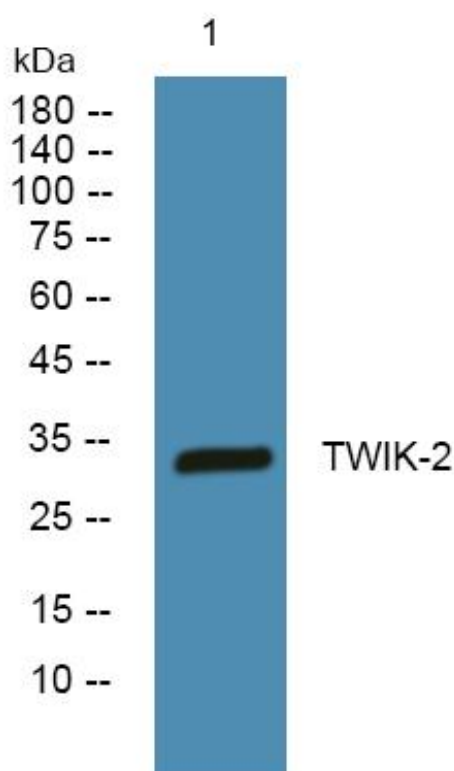
### matters needing attention

Avoid repeated freezing and thawing!

### Usage suggestions

This product can be used in immunological reaction related experiments. For more information, please consult technical personnel.

## Products Images



Western Blot analysis of various cells using TWIK-2 Monoclonal Antibody