



# TRAAK Monoclonal Antibody

Catalog No	BYmab-16504
Isotype	IgG
Reactivity	Human;Mouse
Applications	WB
Gene Name	KCNK4
Protein Name	Potassium channel subfamily K member 4
Immunogen	The antiserum was produced against synthesized peptide derived from human KCNK4. AA range:332-381
Specificity	TRAAK Monoclonal Antibody detects endogenous levels of TRAAK protein.
Formulation	Liquid in PBS containing 50% glycerol, 0.5% BSA and 0.02% sodium azide.
Source	Monoclonal, Mouse,IgG
Purification	The antibody was affinity-purified from mouse antiserum by affinity-chromatography using epitope-specific immunogen.
Dilution	WB 1:500-2000
Concentration	1 mg/ml
Purity	≥90%
Storage Stability	-20°C/1 year
Synonyms	KCNK4; TRAAK; Potassium channel subfamily K member 4; TWIK-related arachidonic acid-stimulated potassium channel protein; TRAAK; Two pore potassium channel KT4.1; Two pore K(+) channel KT4.1
Observed Band	45kD
Cell Pathway	Cell membrane ; Multi-pass membrane protein .
Tissue Specificity	Brain,Frontal cortex,
Function	function:Voltage insensitive, instantaneous, outwardly rectifying potassium channel. Outward rectification is reversed at high external K(+) concentrations.,similarity:Belongs to the two pore domain potassium channel (TC 1.A.1.8) family.,subunit:Homodimer .,
Background	This gene encodes a member of the TWIK-related arachidonic acid-stimulated two pore potassium channel subfamily. The encoded protein homodimerizes and functions as an outwardly rectifying channel. This channel is regulated by polyunsaturated fatty acids, temperature and mechanical deformation of the lipid

Nanjing BYabscience technology Co.,Ltd



membrane. This protein is expressed primarily in neural tissues and may be involved in regulating the noxious input threshold in dorsal root ganglia neurons. Alternate splicing results in multiple transcript variants. Naturally occurring read-through transcripts also exist between this gene and the downstream testis expressed 40 (TEX40) gene, as represented in GeneID: 106780802. [provided by RefSeq, Nov 2015],

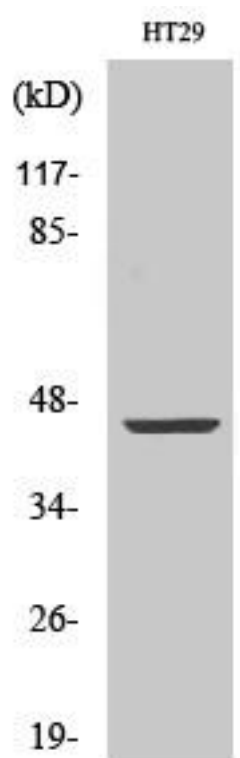
**matters needing attention**

Avoid repeated freezing and thawing!

**Usage suggestions**

This product can be used in immunological reaction related experiments. For more information, please consult technical personnel.

## Products Images



Western Blot analysis of various cells using TRAAK Monoclonal Antibody