



# SMIT Monoclonal Antibody

Catalog No	BYmab-16499
Isotype	IgG
Reactivity	Human;Mouse;Rat
Applications	WB
Gene Name	SLC5A3
Protein Name	Sodium/myo-inositol cotransporter
Immunogen	The antiserum was produced against synthesized peptide derived from human SLC5A3. AA range:221-270
Specificity	SMIT Monoclonal Antibody detects endogenous levels of SMIT protein.
Formulation	Liquid in PBS containing 50% glycerol, 0.5% BSA and 0.02% sodium azide.
Source	Monoclonal, Mouse,IgG
Purification	The antibody was affinity-purified from mouse antiserum by affinity-chromatography using epitope-specific immunogen.
Dilution	WB 1:500-2000
Concentration	1 mg/ml
Purity	≥90%
Storage Stability	-20°C/1 year
Synonyms	SLC5A3; Sodium/myo-inositol cotransporter; Na(+)/myo-inositol cotransporter; Sodium/myo-inositol transporter 1; SMIT1; Solute carrier family 5 member 3
Observed Band	80kD
Cell Pathway	Membrane; Multi-pass membrane protein.
Tissue Specificity	Placenta,
Function	function:Prevents intracellular accumulation of high concentrations of myo-inositol (an osmolyte) that result in impairment of cellular function.,similarity:Belongs to the sodium:solute symporter (SSF) (TC 2.A.21) family.,
Background	function:Prevents intracellular accumulation of high concentrations of myo-inositol (an osmolyte) that result in impairment of cellular function.,similarity:Belongs to the sodium:solute symporter (SSF) (TC 2.A.21) family.,
matters needing attention	Avoid repeated freezing and thawing!

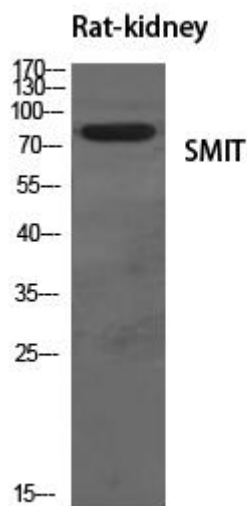
Nanjing BYabscience technology Co.,Ltd



### Usage suggestions

This product can be used in immunological reaction related experiments. For more information, please consult technical personnel.

## Products Images



Western Blot analysis of various cells using SMIT Monoclonal Antibody