



NCKX6 Monoclonal Antibody

Catalog No	BYmab-16481
Isotype	IgG
Reactivity	Human;Rat;Mouse;
Applications	WB
Gene Name	SLC24A6
Protein Name	Sodium/potassium/calcium exchanger 6
Immunogen	The antiserum was produced against synthesized peptide derived from human SLC24A6. AA range:494-543
Specificity	NCKX6 Monoclonal Antibody detects endogenous levels of NCKX6 protein.
Formulation	Liquid in PBS containing 50% glycerol, 0.5% BSA and 0.02% sodium azide.
Source	Monoclonal, Mouse,IgG
Purification	The antibody was affinity-purified from mouse antiserum by affinity-chromatography using epitope-specific immunogen.
Dilution	WB 1:500-2000
Concentration	1 mg/ml
Purity	≥90%
Storage Stability	-20°C/1 year
Synonyms	SLC24A6; NCKX6; NCLX; Sodium/potassium/calcium exchanger 6; Na(+)/K(+)/Ca(2+)-exchange protein 6; Solute carrier family 24 member 6
Observed Band	60kD
Cell Pathway	Mitochondrion inner membrane ; Multi-pass membrane protein .
Tissue Specificity	Present in pancreatic beta-cells (at protein level).
Function	function:Transports Ca(2+) in exchange for either Li(+) or Na(+), explaining how Li(+) catalyzes Ca(2+) exchange. In contrast to other members of the family its function is independent of K(+).,miscellaneous:Strongly inhibited by zinc.,similarity:Belongs to the sodium/potassium/calcium exchanger family. SLC24A subfamily.,
Background	SLC24A6 belongs to a family of potassium-dependent sodium/calcium exchangers that maintain cellular calcium homeostasis through the electrogenic countertransport of 4 sodium ions for 1 calcium ion and 1 potassium ion (Cai and Lytton, 2004 [PubMed 14625281]).[supplied by OMIM, Mar 2008],

Nanjing BYabscience technology Co.,Ltd



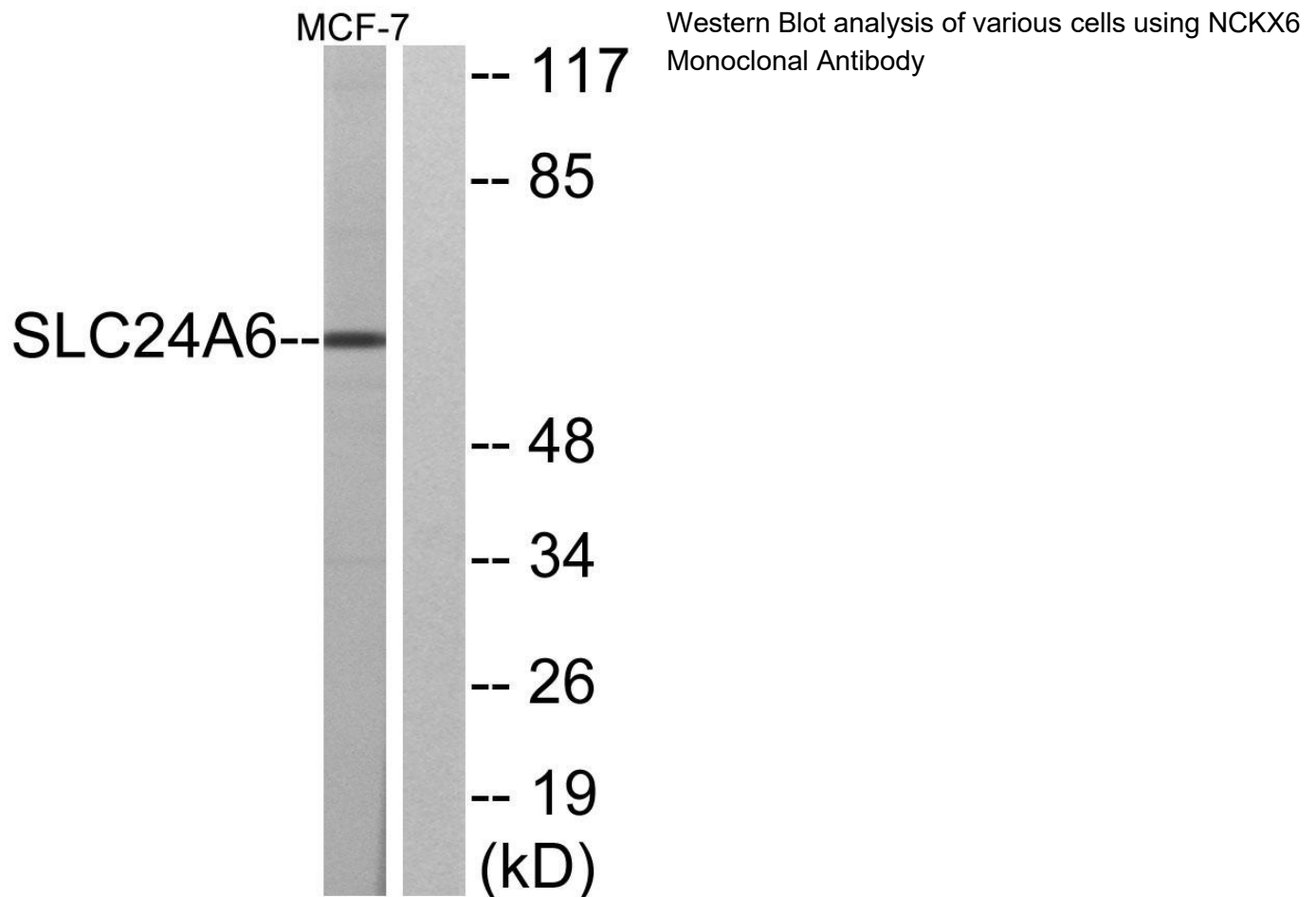
matters needing attention

Avoid repeated freezing and thawing!

Usage suggestions

This product can be used in immunological reaction related experiments. For more information, please consult technical personnel.

Products Images



Nanjing BYabscience technology Co.,Ltd

网址: www.njbybio.com

官方热线: 025-5229-8998

监督电话: 15950492658