



# Na<sup>+</sup> CP type II $\beta$ Monoclonal Antibody

Catalog No	BYmab-16471
Isotype	IgG
Reactivity	Human;Mouse;Rat
Applications	WB
Gene Name	SCN2B
Protein Name	Sodium channel subunit beta-2
Immunogen	The antiserum was produced against synthesized peptide derived from human SCN2B. AA range:71-120
Specificity	Na <sup>+</sup> CP type II $\beta$ Monoclonal Antibody detects endogenous levels of Na <sup>+</sup> CP type II $\beta$ protein.
Formulation	Liquid in PBS containing 50% glycerol, 0.5% BSA and 0.02% sodium azide.
Source	Monoclonal, Mouse,IgG
Purification	The antibody was affinity-purified from mouse antiserum by affinity-chromatography using epitope-specific immunogen.
Dilution	WB 1:500-2000
Concentration	1 mg/ml
Purity	≥90%
Storage Stability	-20°C/1 year
Synonyms	SCN2B; Sodium channel subunit beta-2
Observed Band	24kD
Cell Pathway	Membrane; Single-pass type I membrane protein.
Tissue Specificity	Brain specific.
Function	function:Crucial in the assembly, expression, and functional modulation of the heterotrimeric complex of the sodium channel. The subunit beta-2 causes an increase in the plasma membrane surface area and in its folding into microvilli. Interacts with TNFR may play a crucial role in clustering and regulation of activity of sodium channels at nodes of Ranvier.,similarity:Contains 1 Ig-like C2-type (immunoglobulin-like) domain.,subunit:The sodium channel consists of a pore-forming alpha subunit, beta-1 and beta-2 subunits. Beta-1 is non-covalently associated with alpha, while beta-2 is covalently linked by disulfide bonds. Interaction with SCN10A and TNFR.,tissue specificity:Brain specific.,

Nanjing BYabscience technology Co.,Ltd

网址: [www.njbybio.com](http://www.njbybio.com)

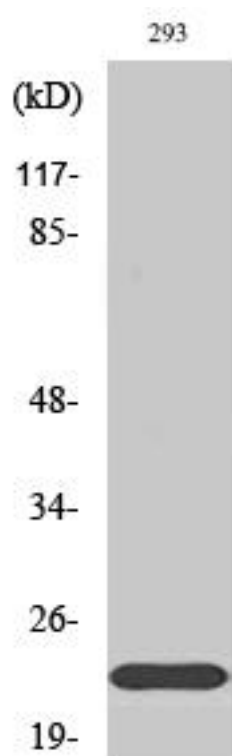
官方热线: 025-5229-8998

监督电话: 15950492658



<b>Background</b>	The protein encoded by this gene is the beta 2 subunit of the type II voltage-gated sodium channel. The encoded protein is involved in cell-cell adhesion and cell migration. Defects in this gene can be a cause of Brugada Syndrome, atrial fibrillation, or sudden infant death syndrome. [provided by RefSeq, Jul 2015],
<b>matters needing attention</b>	Avoid repeated freezing and thawing!
<b>Usage suggestions</b>	This product can be used in immunological reaction related experiments. For more information, please consult technical personnel.

## Products Images



Western Blot analysis of various cells using Na<sup>+</sup> CP type II  $\beta$  Monoclonal Antibody