



mGluR-6 Monoclonal Antibody

Catalog No	BYmab-16468
Isotype	IgG
Reactivity	Human;Rat;Mouse;
Applications	WB
Gene Name	GRM6
Protein Name	Metabotropic glutamate receptor 6
Immunogen	The antiserum was produced against synthesized peptide derived from human mGluR6. AA range:828-877
Specificity	mGluR-6 Monoclonal Antibody detects endogenous levels of mGluR-6 protein.
Formulation	Liquid in PBS containing 50% glycerol, 0.5% BSA and 0.02% sodium azide.
Source	Monoclonal, Mouse,IgG
Purification	The antibody was affinity-purified from mouse antiserum by affinity-chromatography using epitope-specific immunogen.
Dilution	WB 1:500-2000
Concentration	1 mg/ml
Purity	≥90%
Storage Stability	-20°C/1 year
Synonyms	GRM6; GPRC1F; MGLUR6; Metabotropic glutamate receptor 6; mGluR6
Observed Band	100kD
Cell Pathway	Cell membrane ; Multi-pass membrane protein . Endoplasmic reticulum membrane ; Multi-pass membrane protein . Golgi apparatus membrane ; Multi-pass membrane protein . Cell projection, dendrite . Subject to trafficking from the endoplasmic reticulum to the Golgi apparatus and then to the cell membrane.
Tissue Specificity	Detected in melanocytes.
Function	disease:Defects in GRM6 are the cause of congenital stationary night blindness type 1B (CSNB1B) [MIM:257270]. This disorder consists of a previously unrecognized, autosomal recessive form of congenital night blindness associated with a negative electroretinogram waveform. Patients are night blind from an early age, and when maximally dark-adapted, they could perceive lights only with an intensity equal to or slightly dimmer than that normally detected by the cone system. ERGs in response to single brief flashes of light have clearly detectable a-waves, which are derived from photoreceptors, and greatly reduced b-waves,

Nanjing BYabscience technology Co.,Ltd



which are derived from the second-order inner retinal neurons. ERGs in response to sawtooth flickering light indicate a markedly reduced ON response and a nearly normal OFF response. There is no subjective delay in the perception of suddenly appearing white vs black objects

Background

glutamate metabotropic receptor 6 (GRM6) Homo sapiens L-glutamate is the major excitatory neurotransmitter in the central nervous system and activates both ionotropic and metabotropic glutamate receptors. Glutamatergic neurotransmission is involved in most aspects of normal brain function and can be perturbed in many neuropathologic conditions. The metabotropic glutamate receptors are a family of G protein-coupled receptors, that have been divided into 3 groups on the basis of sequence homology, putative signal transduction mechanisms, and pharmacologic properties. Group I includes GRM1 and GRM5 and these receptors have been shown to activate phospholipase C. Group II includes GRM2 and GRM3 while Group III includes GRM4, GRM6, GRM7 and GRM8. Group II and III receptors are linked to the inhibition of the cyclic AMP cascade but differ in their agonist selectivities. [provided by RefSeq, Feb 2012],

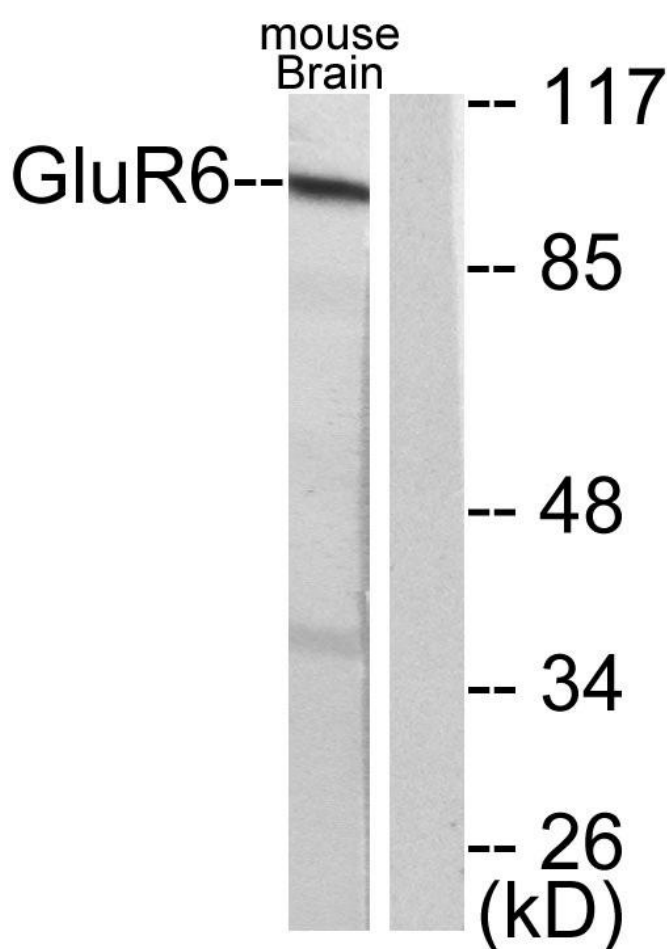
matters needing attention

Avoid repeated freezing and thawing!

Usage suggestions

This product can be used in immunological reaction related experiments. For more information, please consult technical personnel.

Products Images



Western Blot analysis of various cells using mGluR-6 Monoclonal Antibody

Nanjing BYabscience technology Co.,Ltd