



# L-type $\text{Ca}^{++}$ CP $\gamma$ 7 Monoclonal Antibody

<b>Catalog No</b>	BYmab-16462
<b>Isotype</b>	IgG
<b>Reactivity</b>	Human;Mouse;Rat
<b>Applications</b>	WB
<b>Gene Name</b>	CACNG7
<b>Protein Name</b>	Voltage-dependent calcium channel gamma-7 subunit
<b>Immunogen</b>	The antiserum was produced against synthesized peptide derived from human CACNG7. AA range:198-247
<b>Specificity</b>	L-type $\text{Ca}^{++}$ CP $\gamma$ 7 Monoclonal Antibody detects endogenous levels of L-type $\text{Ca}^{++}$ CP $\gamma$ 7 protein.
<b>Formulation</b>	Liquid in PBS containing 50% glycerol, 0.5% BSA and 0.02% sodium azide.
<b>Source</b>	Monoclonal, Mouse,IgG
<b>Purification</b>	The antibody was affinity-purified from mouse antiserum by affinity-chromatography using epitope-specific immunogen.
<b>Dilution</b>	WB 1:500-2000
<b>Concentration</b>	1 mg/ml
<b>Purity</b>	$\geq 90\%$
<b>Storage Stability</b>	$-20^{\circ}\text{C}/1$ year
<b>Synonyms</b>	CACNG7; Voltage-dependent calcium channel gamma-7 subunit; Neuronal voltage-gated calcium channel gamma-7 subunit; Transmembrane AMPAR regulatory protein gamma-7; TARP gamma-7
<b>Observed Band</b>	40kD
<b>Cell Pathway</b>	Cell membrane ; Multi-pass membrane protein .
<b>Tissue Specificity</b>	Detected in heart left ventricle (PubMed:21127204). Widely expressed.
<b>Function</b>	function:Thought to stabilize the calcium channel in an inactivated (closed) state.,similarity:Belongs to the PMP-22/EMP/MP20 family. CACNG subfamily.,subunit:The L-type calcium channel is composed of five subunits: alpha-1, alpha-2/delta, beta and gamma.,tissue specificity:Widely expressed.,
<b>Background</b>	calcium voltage-gated channel auxiliary subunit gamma 7(CACNG7) Homo sapiens The protein encoded by this gene is a type II transmembrane AMPA receptor regulatory protein (TARP). TARPs regulate both trafficking and channel gating of the AMPA receptors. This gene is part of a functionally diverse

**Nanjing BYabscience technology Co.,Ltd**



eight-member protein subfamily of the PMP-22/EMP/MP20 family and is located in a cluster with two family members, a type I TARP and a calcium channel gamma subunit. [provided by RefSeq, Dec 2010],

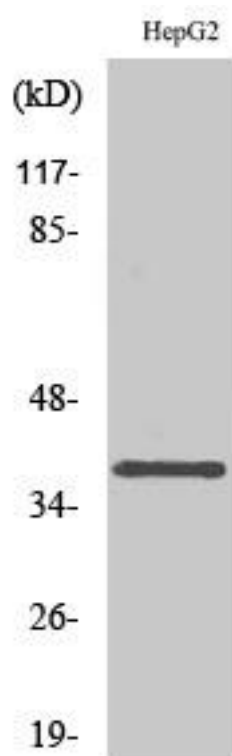
**matters needing attention**

Avoid repeated freezing and thawing!

**Usage suggestions**

This product can be used in immunological reaction related experiments. For more information, please consult technical personnel.

## Products Images



Western Blot analysis of various cells using L-type Ca<sup>++</sup> CP γ 7 Monoclonal Antibody