



CLIC6 Monoclonal Antibody

Catalog No	BYmab-16406
Isotype	IgG
Reactivity	Human;Rat;Mouse;
Applications	WB
Gene Name	CLIC6
Protein Name	Chloride intracellular channel protein 6
Immunogen	The antiserum was produced against synthesized peptide derived from human CLIC6. AA range:411-460
Specificity	CLIC6 Monoclonal Antibody detects endogenous levels of CLIC6 protein.
Formulation	Liquid in PBS containing 50% glycerol, 0.5% BSA and 0.02% sodium azide.
Source	Monoclonal, Mouse,IgG
Purification	The antibody was affinity-purified from mouse antiserum by affinity-chromatography using epitope-specific immunogen.
Dilution	WB 1:500-2000
Concentration	1 mg/ml
Purity	≥90%
Storage Stability	-20°C/1 year
Synonyms	CLIC6; CLIC1L; Chloride intracellular channel protein 6; Parchorin
Observed Band	75kD
Cell Pathway	Cytoplasm . Cell membrane ; Single-pass membrane protein . Predominantly cytoplasmic. Upon chloride ion efflux from the cell, it is translocated to the plasma membrane (By similarity). .
Tissue Specificity	Expressed in brain, placenta, pancreas and liver.
Function	domain:Members of this family may change from a globular, soluble state to a state where the N-terminal domain is inserted into the membrane and functions as chloride channel. A conformation change of the N-terminal domain is thought to expose hydrophobic surfaces that trigger membrane insertion.,function:May insert into membranes and form chloride ion channels. May play a critical role in water-secreting cells, possibly through the regulation of chloride ion transport.,PTM:Phosphorylated.,similarity:Belongs to the chloride channel CLIC family.,similarity:Contains 1 GST C-terminal domain.,subcellular location:Predominantly cytoplasmic. Upon chloride ion efflux from the cell, it is translocated to the plasma membrane.,subunit:Interacts with dopamine receptors

Nanjing BYabscience technology Co.,Ltd



DRD2, DRD3 and DRD4.,tissue specificity:Expressed in brain, placenta, pancreas and liver.,

Background

chloride intracellular channel 6(CLIC6) Homo sapiens This gene encodes a member of the chloride intracellular channel family of proteins. The gene is part of a large triplicated region found on chromosomes 1, 6, and 21. Alternative splicing results in multiple transcript variants encoding different isoforms. [provided by RefSeq, Nov 2015],

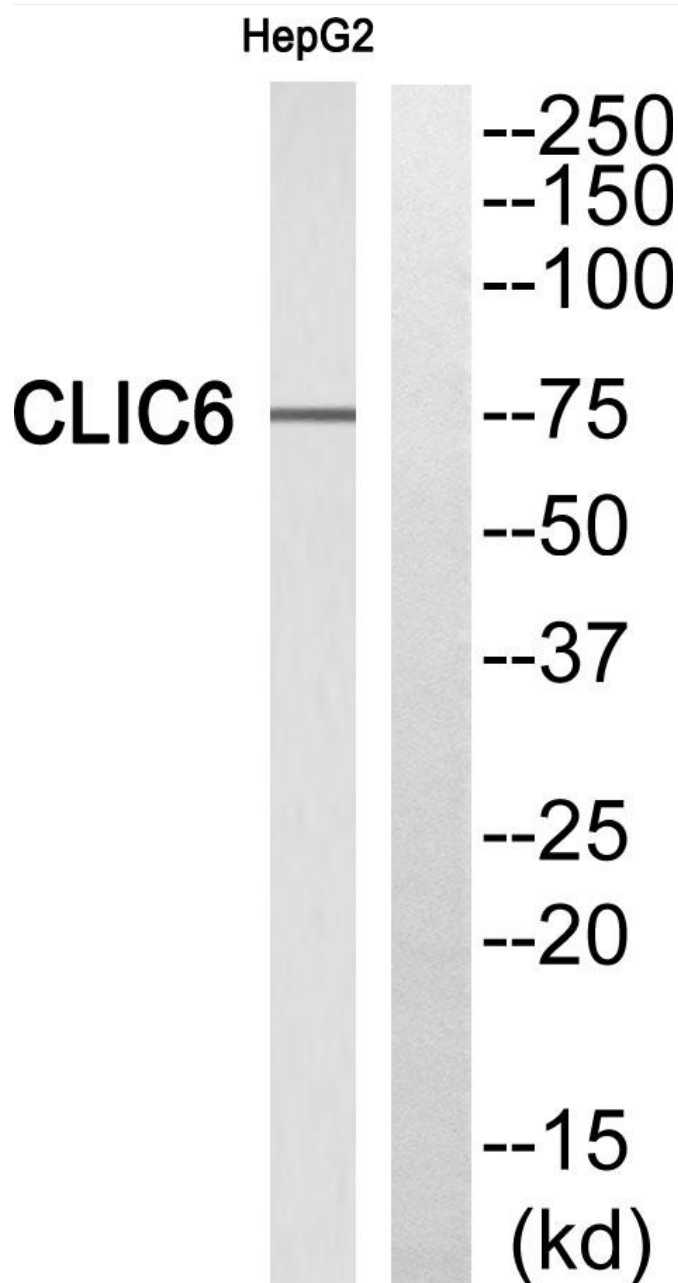
matters needing attention

Avoid repeated freezing and thawing!

Usage suggestions

This product can be used in immunological reaction related experiments. For more information, please consult technical personnel.

Products Images



Western Blot analysis of various cells using CLIC6 Monoclonal Antibody

Nanjing BYabscience technology Co.,Ltd