



CLIC3 Monoclonal Antibody

Catalog No	BYmab-16404
Isotype	IgG
Reactivity	Human;Rat;Mouse;
Applications	WB
Gene Name	CLIC3
Protein Name	Chloride intracellular channel protein 3
Immunogen	The antiserum was produced against synthesized peptide derived from human CLIC3. AA range:21-70
Specificity	CLIC3 Monoclonal Antibody detects endogenous levels of CLIC3 protein.
Formulation	Liquid in PBS containing 50% glycerol, 0.5% BSA and 0.02% sodium azide.
Source	Monoclonal, Mouse,IgG
Purification	The antibody was affinity-purified from mouse antiserum by affinity-chromatography using epitope-specific immunogen.
Dilution	WB 1:500-2000
Concentration	1 mg/ml
Purity	≥90%
Storage Stability	-20°C/1 year
Synonyms	CLIC3; Chloride intracellular channel protein 3
Observed Band	27kD
Cell Pathway	Nucleus. Membrane; Single-pass membrane protein. Cytoplasm. Predominantly nuclear. Some protein was found in the cytoplasm. Exists both as soluble cytoplasmic protein and as membrane protein with probably a single transmembrane domain (By similarity). .
Tissue Specificity	Detected in placenta (at protein level). Widely expressed. High expression is found in placenta followed by lung and heart. Low expression in skeletal muscle, kidney and pancreas.
Function	domain:Members of this family may change from a globular, soluble state to a state where the N-terminal domain is inserted into the membrane and functions as chloride channel. A conformation change of the N-terminal domain is thought to expose hydrophobic surfaces that trigger membrane insertion.,function:Can insert into membranes and form chloride ion channels. May participate in cellular growth control.,similarity:Belongs to the chloride channel CLIC family.,similarity:Contains 1 GST C-terminal domain.,similarity:Contains 1 GST N-terminal domain.,subcellular location:Predominantly nuclear. Some protein was found in

Nanjing BYabscience technology Co.,Ltd



the cytoplasm. Exists both as soluble cytoplasmic protein and as membrane protein with probably a single transmembrane domain.,subunit:Associated with the C-terminal of ERK7.,tissue specificity:Detected in placenta (at protein level). Widely expressed. High expression is fou

Background

chloride intracellular channel 3(CLIC3) Homo sapiens Chloride channels are a diverse group of proteins that regulate fundamental cellular processes including stabilization of cell membrane potential, transepithelial transport, maintenance of intracellular pH, and regulation of cell volume. Chloride intracellular channel 3 is a member of the p64 family and is predominantly localized in the nucleus and stimulates chloride ion channel activity. In addition, this protein may participate in cellular growth control, based on its association with ERK7, a member of the MAP kinase family. [provided by RefSeq, Jul 2008],

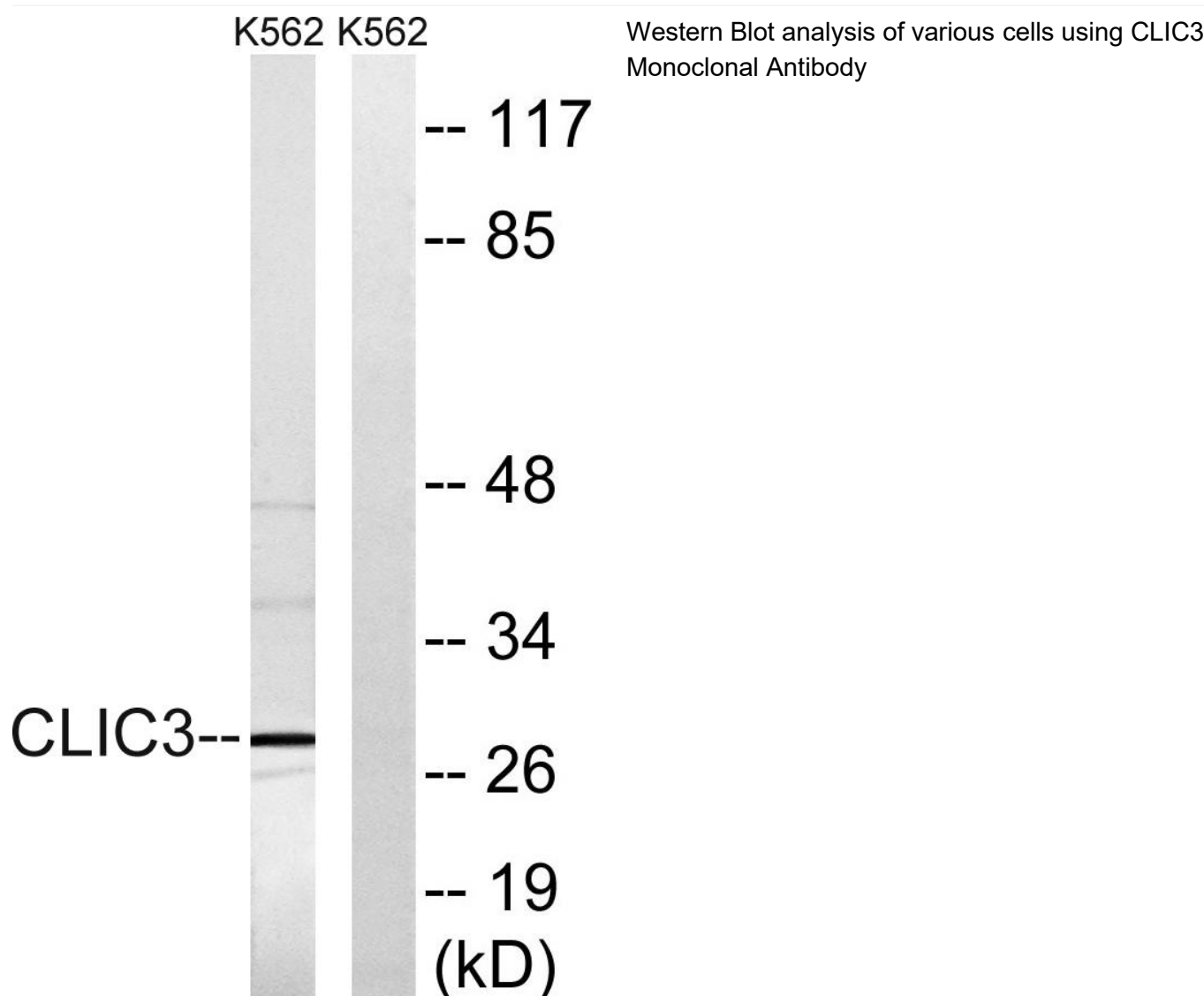
matters needing attention

Avoid repeated freezing and thawing!

Usage suggestions

This product can be used in immunological reaction related experiments. For more information, please consult technical personnel.

Products Images



Nanjing BYabscience technology Co.,Ltd