



# CLCC1 Monoclonal Antibody

<b>Catalog No</b>	BYmab-16402
<b>Isotype</b>	IgG
<b>Reactivity</b>	Human;Rat;Mouse;
<b>Applications</b>	WB
<b>Gene Name</b>	CLCC1
<b>Protein Name</b>	Chloride channel CLIC-like protein 1
<b>Immunogen</b>	The antiserum was produced against synthesized peptide derived from human CLCC1. AA range:391-440
<b>Specificity</b>	CLCC1 Monoclonal Antibody detects endogenous levels of CLCC1 protein.
<b>Formulation</b>	Liquid in PBS containing 50% glycerol, 0.5% BSA and 0.02% sodium azide.
<b>Source</b>	Monoclonal, Mouse,IgG
<b>Purification</b>	The antibody was affinity-purified from mouse antiserum by affinity-chromatography using epitope-specific immunogen.
<b>Dilution</b>	WB 1:500-2000
<b>Concentration</b>	1 mg/ml
<b>Purity</b>	≥90%
<b>Storage Stability</b>	-20°C/1 year
<b>Synonyms</b>	CLCC1; KIAA0761; MCLC; Chloride channel CLIC-like protein 1; Mid-1-related chloride channel protein 1
<b>Observed Band</b>	62kD
<b>Cell Pathway</b>	Endoplasmic reticulum membrane ; Multi-pass membrane protein . Golgi apparatus membrane ; Multi-pass membrane protein . Nucleus membrane ; Multi-pass membrane protein . Within the endoplasmic reticulum (ER), localizes to the mitochondria-associated ER membrane, a zone of contact between the ER and mitochondrial membranes. .
<b>Tissue Specificity</b>	Expressed in the retina of the eye, with extensive expression in the lamina cribrosa, optic nerve, ganglion cell layer, inner nuclear layer, outer nuclear layer and retinal pigment epithelium.
<b>Function</b>	function:Seems to act as a chloride ion channel.,similarity:Belongs to the chloride channel MCLC family.,
<b>Background</b>	function:Seems to act as a chloride ion channel.,similarity:Belongs to the chloride channel MCLC family.,

**Nanjing BYabscience technology Co.,Ltd**

网址: [www.njbybio.com](http://www.njbybio.com)

官方热线: 025-5229-8998

监督电话: 15950492658



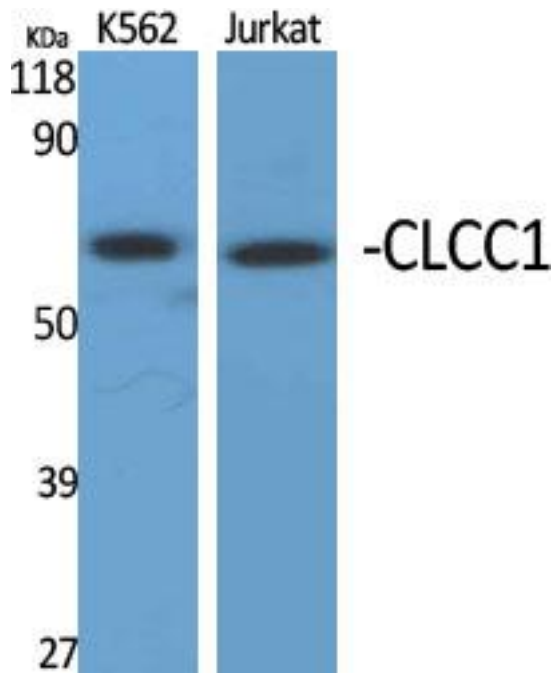
**matters needing attention**

Avoid repeated freezing and thawing!

**Usage suggestions**

This product can be used in immunological reaction related experiments. For more information, please consult technical personnel.

**Products Images**



Western Blot analysis of various cells using CLCC1 Monoclonal Antibody

Nanjing BYabs science technology Co.,Ltd

网址: [www.njbybio.com](http://www.njbybio.com)

官方热线: 025-5229-8998

监督电话: 15950492658