



# ATP5S Monoclonal Antibody

<b>Catalog No</b>	BYmab-16393
<b>Isotype</b>	IgG
<b>Reactivity</b>	Human;Mouse
<b>Applications</b>	WB
<b>Gene Name</b>	ATP5S
<b>Protein Name</b>	ATP synthase subunit s mitochondrial
<b>Immunogen</b>	The antiserum was produced against synthesized peptide derived from human ATP5S. AA range:21-70
<b>Specificity</b>	ATP5S Monoclonal Antibody detects endogenous levels of ATP5S protein.
<b>Formulation</b>	Liquid in PBS containing 50% glycerol, 0.5% BSA and 0.02% sodium azide.
<b>Source</b>	Monoclonal, Mouse,IgG
<b>Purification</b>	The antibody was affinity-purified from mouse antiserum by affinity-chromatography using epitope-specific immunogen.
<b>Dilution</b>	WB 1:500-2000
<b>Concentration</b>	1 mg/ml
<b>Purity</b>	≥90%
<b>Storage Stability</b>	-20°C/1 year
<b>Synonyms</b>	ATP5S; ATPW; ATP synthase subunit s; mitochondrial; ATP synthase-coupling factor B; FB; Mitochondrial ATP synthase regulatory component factor B
<b>Observed Band</b>	23kD
<b>Cell Pathway</b>	Mitochondrion . Mitochondrion inner membrane .
<b>Tissue Specificity</b>	Brain,Hippocampus,Uterus,
<b>Function</b>	caution:It is uncertain whether Met-1 or Met-16 is the initiator.,function:Involved in regulation of mitochondrial membrane ATP synthase. Necessary for H(+) conduction of ATP synthase.,similarity:Belongs to the ATP synthase subunit s family.,subunit:Monomer. Associates with ATP synthase.,
<b>Background</b>	This gene encodes a subunit of mitochondrial ATP synthase. Mitochondrial ATP synthase catalyzes ATP synthesis, utilizing an electrochemical gradient of protons across the inner membrane during oxidative phosphorylation. ATP synthase is composed of two linked multi-subunit complexes: the soluble catalytic core, F1, and the membrane-spanning component, Fo, comprising the proton channel. This gene encodes the subunit s, also known as factor B, of the proton channel. This

**Nanjing BYabscience technology Co.,Ltd**



subunit is necessary for the energy transduction activity of the ATP synthase complexes. Alternatively spliced transcript variants encoding different isoforms have been identified. [provided by RefSeq, Jul 2008],

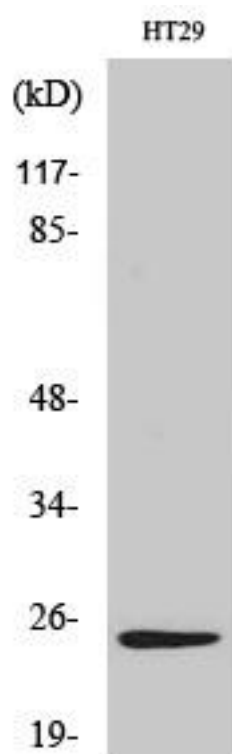
**matters needing attention**

Avoid repeated freezing and thawing!

**Usage suggestions**

This product can be used in immunological reaction related experiments. For more information, please consult technical personnel.

## Products Images



Western Blot analysis of various cells using ATP5S Monoclonal Antibody