



AQP12 Monoclonal Antibody

Catalog No	BYmab-16378
Isotype	IgG
Reactivity	Human;Rat;Mouse;
Applications	WB
Gene Name	AQP12A/AQP12B
Protein Name	Aquaporin-12A/B
Immunogen	The antiserum was produced against synthesized peptide derived from human AQP12. AA range:231-280
Specificity	AQP12 Monoclonal Antibody detects endogenous levels of AQP12 protein.
Formulation	Liquid in PBS containing 50% glycerol, 0.5% BSA and 0.02% sodium azide.
Source	Monoclonal, Mouse,IgG
Purification	The antibody was affinity-purified from mouse antiserum by affinity-chromatography using epitope-specific immunogen.
Dilution	WB 1:500-2000
Concentration	1 mg/ml
Purity	≥90%
Storage Stability	-20°C/1 year
Synonyms	AQP12A; AQP12; AQPX2; Aquaporin-12A; AQP-12; AQP12B; Aquaporin-12B; AQP-12B
Observed Band	34kD
Cell Pathway	Membrane ; Multi-pass membrane protein .
Tissue Specificity	Restricted to the pancreas.
Function	domain:Aquaporins contain two tandem repeats each containing three membrane-spanning domains and a pore-forming loop with the signature motif Asn-Pro-Ala (NPA).,function:Aquaporins facilitate the transport of water and small neutral solutes across cell membranes.,similarity:Belongs to the MIP/aquaporin (TC 1.A.8) family. AQP11/AQP12 subfamily.,tissue specificity:Restricted to the pancreas.,
Background	domain:Aquaporins contain two tandem repeats each containing three membrane-spanning domains and a pore-forming loop with the signature motif Asn-Pro-Ala (NPA).,function:Aquaporins facilitate the transport of water and small neutral solutes across cell membranes.,similarity:Belongs to the MIP/aquaporin

Nanjing BYabscience technology Co.,Ltd



(TC 1.A.8) family. AQP11/AQP12 subfamily.,tissue specificity:Restricted to the pancreas.,

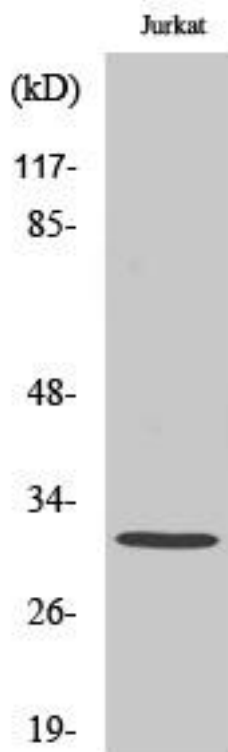
matters needing attention

Avoid repeated freezing and thawing!

Usage suggestions

This product can be used in immunological reaction related experiments. For more information, please consult technical personnel.

Products Images



Western Blot analysis of various cells using AQP12 Monoclonal Antibody