



# AChRα5 Monoclonal Antibody

<b>Catalog No</b>	BYmab-16371
<b>Isotype</b>	IgG
<b>Reactivity</b>	Human;Mouse;Rat;Monkey
<b>Applications</b>	WB
<b>Gene Name</b>	CHRNA5
<b>Protein Name</b>	Neuronal acetylcholine receptor subunit alpha-5
<b>Immunogen</b>	The antiserum was produced against synthesized peptide derived from human AChRα5. AA range:166-215
<b>Specificity</b>	AChR α 5 Monoclonal Antibody detects endogenous levels of AChR α 5 protein.
<b>Formulation</b>	Liquid in PBS containing 50% glycerol, 0.5% BSA and 0.02% sodium azide.
<b>Source</b>	Monoclonal, Mouse,IgG
<b>Purification</b>	The antibody was affinity-purified from mouse antiserum by affinity-chromatography using epitope-specific immunogen.
<b>Dilution</b>	WB 1:500-2000
<b>Concentration</b>	1 mg/ml
<b>Purity</b>	≥90%
<b>Storage Stability</b>	-20°C/1 year
<b>Synonyms</b>	CHRNA5; NACHRA5; Neuronal acetylcholine receptor subunit alpha-5
<b>Observed Band</b>	53kD
<b>Cell Pathway</b>	Cell junction, synapse, postsynaptic cell membrane; Multi-pass membrane protein. Cell membrane; Multi-pass membrane protein.
<b>Tissue Specificity</b>	Eye,
<b>Function</b>	disease:Genetic variations in CHRNA5 may be associated with susceptibility to lung cancer type 2 (LNCR2) [MIM:612052].,function:After binding acetylcholine, the AChR responds by an extensive change in conformation that affects all subunits and leads to opening of an ion-conducting channel across the plasma membrane.,similarity:Belongs to the ligand-gated ionic channel (TC 1.A.9) family.,subunit:Neuronal AChR seems to be composed of two different type of subunits: alpha and non-alpha (beta).,
<b>Background</b>	The protein encoded by this gene is a nicotinic acetylcholine receptor subunit and a member of a superfamily of ligand-gated ion channels that mediate fast signal transmission at synapses. These receptors are thought to be

**Nanjing BYabscience technology Co.,Ltd**



heteropentamers composed of separate but similar subunits. Defects in this gene have been linked to susceptibility to lung cancer type 2 (LNCR2).[provided by RefSeq, Jun 2010],

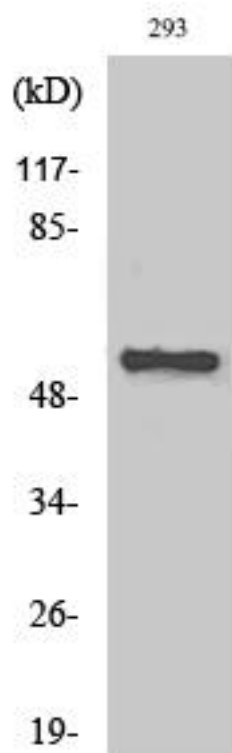
**matters needing attention**

Avoid repeated freezing and thawing!

**Usage suggestions**

This product can be used in immunological reaction related experiments. For more information, please consult technical personnel.

## Products Images



Western Blot analysis of various cells using AChR  $\alpha$  5 Monoclonal Antibody