



# Kv11.3 Monoclonal Antibody

<b>Catalog No</b>	BYmab-16311
<b>Isotype</b>	IgG
<b>Reactivity</b>	Human;Rat;Mouse
<b>Applications</b>	WB
<b>Gene Name</b>	KCNH7
<b>Protein Name</b>	Potassium voltage-gated channel subfamily H member 7 (Ether-a-go-go-related gene potassium channel 3) (ERG-3) (Eag-related protein 3) (Ether-a-go-go-related protein 3) (hERG-3) (Voltage-gated potassium channel subunit Kv11.3)
<b>Immunogen</b>	Synthetic Peptide of Kv11.3. AA range 1130-1180
<b>Specificity</b>	Kv11.3 protein(A263) detects endogenous levels of Kv11.3
<b>Formulation</b>	Liquid in PBS containing 50% glycerol, 0.5% BSA and 0.02% sodium azide.
<b>Source</b>	Monoclonal, Mouse,IgG
<b>Purification</b>	The antibody was affinity-purified from mouse antiserum by affinity-chromatography using epitope-specific immunogen.
<b>Dilution</b>	WB 1:500-2000
<b>Concentration</b>	1 mg/ml
<b>Purity</b>	≥90%
<b>Storage Stability</b>	-20°C/1 year
<b>Synonyms</b>	Potassium voltage-gated channel subfamily H member 7 (Ether-a-go-go-related gene potassium channel 3;ERG-3;Eag-related protein 3;Ether-a-go-go-related protein 3;hERG-3;Voltage-gated potassium channel subunit Kv11.3)
<b>Observed Band</b>	83135kD
<b>Cell Pathway</b>	Membrane; Multi-pass membrane protein.
<b>Tissue Specificity</b>	Expressed in prolactin-secreting adenomas.
<b>Function</b>	domain:The segment S4 is probably the voltage-sensor and is characterized by a series of positively charged amino acids at every third position.,function:Pore-forming (alpha) subunit of voltage-gated potassium channel. Channel properties may be modulated by cAMP and subunit assembly.,similarity:Belongs to the potassium channel family. H (Eag) subfamily.,similarity:Contains 1 cyclic nucleotide-binding domain.,similarity:Contains 1 PAC (PAS-associated C-terminal) domain.,similarity:Contains 1 PAS (PER-ARNT-SIM) domain.,subunit:The

**Nanjing BYabscience technology Co.,Ltd**



potassium channel is probably composed of a homo- or heterotetrameric complex of pore-forming alpha subunits that can associate with modulating beta subunits. Heteromultimer with KCNH2/ERG1 and KCNH6/ERG2.,tissue specificity:Expressed in prolactin-secreting adenomas.,

## Background

Voltage-gated potassium (Kv) channels represent the most complex class of voltage-gated ion channels from both functional and structural standpoints. Their diverse functions include regulating neurotransmitter release, heart rate, insulin secretion, neuronal excitability, epithelial electrolyte transport, smooth muscle contraction, and cell volume. This gene encodes a member of the potassium channel, voltage-gated, subfamily H. This member is a pore-forming (alpha) subunit. There are at least two alternatively spliced transcript variants derived from this gene and encoding distinct isoforms. [provided by RefSeq, Jul 2008],

## matters needing attention

Avoid repeated freezing and thawing!

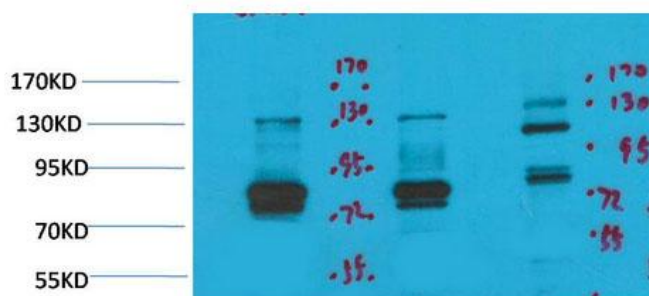
## Usage suggestions

This product can be used in immunological reaction related experiments. For more information, please consult technical personnel.

## Products Images

1 2 3

Western Blot analysis of various cells using Kv11.3 Monoclonal Antibody



Nanjing BYabscience technology Co.,Ltd

网址: [www.njbybio.com](http://www.njbybio.com)

官方热线: 025-5229-8998

监督电话: 15950492658