



Calnexin (phospho Ser583) Monoclonal Antibody

Catalog No	BYmab-16283
Isotype	IgG
Reactivity	Human;Mouse;Rat
Applications	WB
Gene Name	CANX
Protein Name	Calnexin
Immunogen	The antiserum was produced against synthesized peptide derived from human Calnexin around the phosphorylation site of Ser583. AA range:543-592
Specificity	Phospho-Calnexin (S583) Monoclonal Antibody detects endogenous levels of Calnexin protein only when phosphorylated at S583.
Formulation	Liquid in PBS containing 50% glycerol, 0.5% BSA and 0.02% sodium azide.
Source	Monoclonal, Mouse,IgG
Purification	The antibody was affinity-purified from mouse antiserum by affinity-chromatography using epitope-specific immunogen.
Dilution	WB 1:500-2000
Concentration	1 mg/ml
Purity	≥90%
Storage Stability	-20°C/1 year
Synonyms	CANX; Calnexin; IP90; Major histocompatibility complex class I antigen-binding protein p88; p90
Observed Band	90kD
Cell Pathway	Endoplasmic reticulum membrane ; Single-pass type I membrane protein . Endoplasmic reticulum . Melanosome . Identified by mass spectrometry in melanosome fractions from stage I to stage IV (PubMed:12643545, PubMed:17081065). The palmitoylated form preferentially localizes to the perinuclear rough ER (PubMed:22314232). .
Tissue Specificity	B-cell lymphoma,Epithelium,Fibroblast,Keratinocyte,Kidney,Liver,Lymph,Placenta,Plate let,
Function	function:Calcium-binding protein that interacts with newly synthesized glycoproteins in the endoplasmic reticulum. It may act in assisting protein assembly and/or in the retention within the ER of unassembled protein subunits. It seems to play a major role in the quality control apparatus of the ER by the retention of incorrectly folded proteins.,online information:Calnexin entry,similarity:Belongs to the calreticulin family.,subcellular location:Identified by

Nanjing BYabscience technology Co.,Ltd



mass spectrometry in melanosome fractions from stage I to stage IV.,

Background

This gene encodes a member of the calnexin family of molecular chaperones. The encoded protein is a calcium-binding, endoplasmic reticulum (ER)-associated protein that interacts transiently with newly synthesized N-linked glycoproteins, facilitating protein folding and assembly. It may also play a central role in the quality control of protein folding by retaining incorrectly folded protein subunits within the ER for degradation. Alternatively spliced transcript variants encoding the same protein have been described. [provided by RefSeq, Jul 2008],

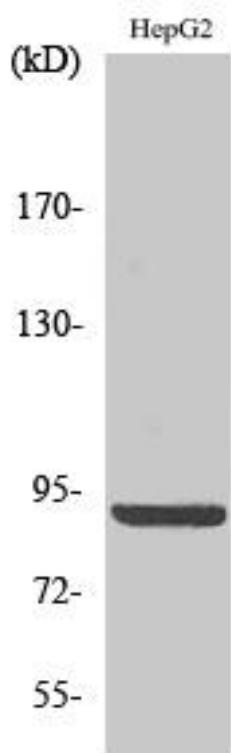
matters needing attention

Avoid repeated freezing and thawing!

Usage suggestions

This product can be used in immunological reaction related experiments. For more information, please consult technical personnel.

Products Images



Western Blot analysis of various cells using Calnexin (phospho Ser583) Monoclonal Antibody

Nanjing BYabs science technology Co.,Ltd

网址: www.njbybio.com

官方热线: 025-5229-8998

监督电话: 15950492658