



Sos 2 Monoclonal Antibody

Catalog No	BYmab-16252
Isotype	IgG
Reactivity	Human;Rat;Mouse;
Applications	WB
Gene Name	SOS2
Protein Name	Son of sevenless homolog 2
Immunogen	The antiserum was produced against synthesized peptide derived from human SOS2. AA range:631-680
Specificity	Sos 2 Monoclonal Antibody detects endogenous levels of Sos 2 protein.
Formulation	Liquid in PBS containing 50% glycerol, 0.5% BSA and 0.02% sodium azide.
Source	Monoclonal, Mouse,IgG
Purification	The antibody was affinity-purified from mouse antiserum by affinity-chromatography using epitope-specific immunogen.
Dilution	WB 1:500-2000
Concentration	1 mg/ml
Purity	≥90%
Storage Stability	-20°C/1 year
Synonyms	SOS2; Son of sevenless homolog 2; SOS-2
Observed Band	150kD
Cell Pathway	intracellular,cytosol,
Tissue Specificity	Brain,Placenta,
Function	function:Promotes the exchange of Ras-bound GDP by GTP.,online information:Son of sevenless entry,similarity:Contains 1 DH (DBL-homology) domain.,similarity:Contains 1 N-terminal Ras-GEF domain.,similarity:Contains 1 PH domain.,similarity:Contains 1 Ras-GEF domain.,
Background	This gene encodes a regulatory protein that is involved in the positive regulation of ras proteins. Mutations in this gene are associated with Noonan Syndrome-9. [provided by RefSeq, Jul 2016],
matters needing attention	Avoid repeated freezing and thawing!

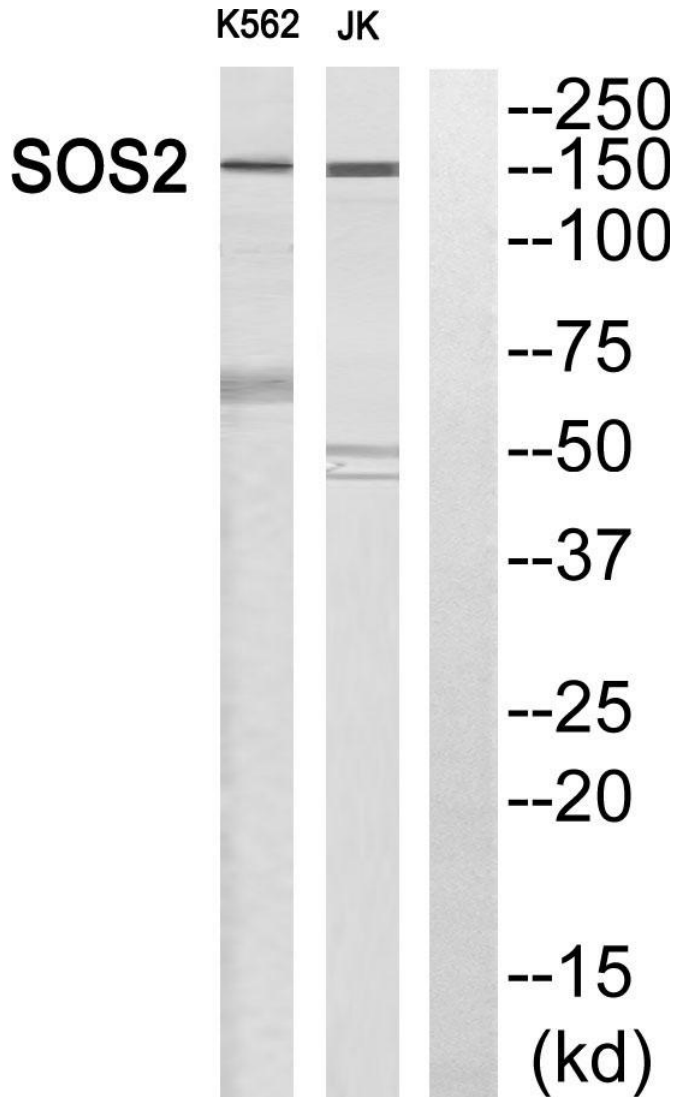
Nanjing BYabscience technology Co.,Ltd



Usage suggestions

This product can be used in immunological reaction related experiments. For more information, please consult technical personnel.

Products Images



Western Blot analysis of various cells using Sos 2 Monoclonal Antibody

Nanjing BYabs science technology Co.,Ltd

网址: www.njbybio.com

官方热线: 025-5229-8998

监督电话: 15950492658