



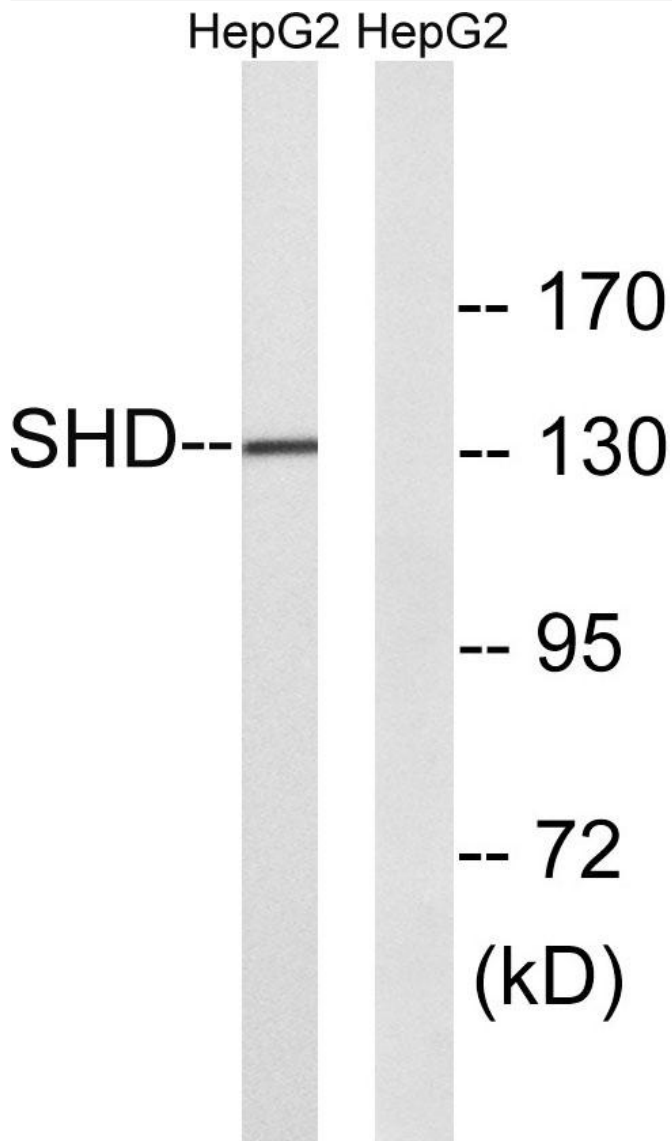
# Shd Monoclonal Antibody

Catalog No	BYmab-16250
Isotype	IgG
Reactivity	Human;Rat;Mouse;
Applications	WB
Gene Name	SHD
Protein Name	SH2 domain-containing adapter protein D
Immunogen	The antiserum was produced against synthesized peptide derived from human SHD. AA range:141-190
Specificity	Shd Monoclonal Antibody detects endogenous levels of Shd protein.
Formulation	Liquid in PBS containing 50% glycerol, 0.5% BSA and 0.02% sodium azide.
Source	Monoclonal, Mouse,IgG
Purification	The antibody was affinity-purified from mouse antiserum by affinity-chromatography using epitope-specific immunogen.
Dilution	WB 1:500-2000
Concentration	1 mg/ml
Purity	≥90%
Storage Stability	-20°C/1 year
Synonyms	SHD; SH2 domain-containing adapter protein D
Observed Band	130kD
Cell Pathway	
Tissue Specificity	Neuroblastoma,
Function	function:May function as an adapter protein.,PTM:Tyrosine phosphorylated by ABL.,similarity:Contains 1 SH2 domain.,
Background	function:May function as an adapter protein.,PTM:Tyrosine phosphorylated by ABL.,similarity:Contains 1 SH2 domain.,
matters needing attention	Avoid repeated freezing and thawing!
Usage suggestions	This product can be used in immunological reaction related experiments. For more information, please consult technical personnel.

Nanjing BYabscience technology Co.,Ltd



## Products Images



Western Blot analysis of various cells using Shd Monoclonal Antibody

Nanjing BYabs science technology Co.,Ltd

网址: [www.njbybio.com](http://www.njbybio.com)

官方热线: 025-5229-8998

监督电话: 15950492658