



# RRP22 Monoclonal Antibody

Catalog No	BYmab-16248
Isotype	IgG
Reactivity	Human;Mouse
Applications	WB
Gene Name	RASL10A
Protein Name	Ras-like protein family member 10A
Immunogen	The antiserum was produced against synthesized peptide derived from human RASL10A. AA range:107-156
Specificity	RRP22 Monoclonal Antibody detects endogenous levels of RRP22 protein.
Formulation	Liquid in PBS containing 50% glycerol, 0.5% BSA and 0.02% sodium azide.
Source	Monoclonal, Mouse,IgG
Purification	The antibody was affinity-purified from mouse antiserum by affinity-chromatography using epitope-specific immunogen.
Dilution	WB 1:500-2000
Concentration	1 mg/ml
Purity	≥90%
Storage Stability	-20°C/1 year
Synonyms	RASL10A; RRP22; Ras-like protein family member 10A; Ras-like protein RRP22; Ras-related protein on chromosome 22
Observed Band	30kD
Cell Pathway	Cell membrane ; Lipid-anchor ; Cytoplasmic side . Nucleus, nucleolus . May cycle in and out of the nucleolus in a GTP-dependent manner.
Tissue Specificity	Expression appears to be strictly limited to the central nervous system.
Function	similarity:Belongs to the small GTPase superfamily. Ras family.,
Background	similarity:Belongs to the small GTPase superfamily. Ras family.,
matters needing attention	Avoid repeated freezing and thawing!

Nanjing BYabscience technology Co.,Ltd

网址: [www.njbybio.com](http://www.njbybio.com)

官方热线: 025-5229-8998

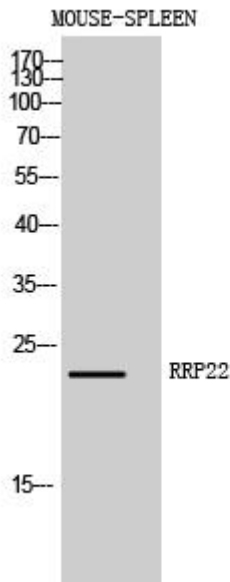
监督电话: 15950492658



### Usage suggestions

This product can be used in immunological reaction related experiments. For more information, please consult technical personnel.

## Products Images



Western Blot analysis of various cells using RRP22 Monoclonal Antibody