



# RHOBTB3 Monoclonal Antibody

<b>Catalog No</b>	BYmab-16246
<b>Isotype</b>	IgG
<b>Reactivity</b>	Human;Mouse
<b>Applications</b>	WB
<b>Gene Name</b>	RHOBTB3
<b>Protein Name</b>	Rho-related BTB domain-containing protein 3
<b>Immunogen</b>	The antiserum was produced against synthesized peptide derived from human RHOBTB3. AA range:335-384
<b>Specificity</b>	RHOBTB3 Monoclonal Antibody detects endogenous levels of RHOBTB3 protein.
<b>Formulation</b>	Liquid in PBS containing 50% glycerol, 0.5% BSA and 0.02% sodium azide.
<b>Source</b>	Monoclonal, Mouse,IgG
<b>Purification</b>	The antibody was affinity-purified from mouse antiserum by affinity-chromatography using epitope-specific immunogen.
<b>Dilution</b>	WB 1:500-2000
<b>Concentration</b>	1 mg/ml
<b>Purity</b>	≥90%
<b>Storage Stability</b>	-20°C/1 year
<b>Synonyms</b>	RHOBTB3; KIAA0878; Rho-related BTB domain-containing protein 3
<b>Observed Band</b>	70kD
<b>Cell Pathway</b>	Golgi apparatus .
<b>Tissue Specificity</b>	Ubiquitous. Highly expressed in neural and cardiac tissues, pancreas, placenta and testis.
<b>Function</b>	similarity:Contains 2 BTB (POZ) domains.,tissue specificity:Ubiquitous. Highly expressed in neural and cardiac tissues, pancreas, placenta and testis.,
<b>Background</b>	RHOBTB3 is a member of the evolutionarily conserved RHOBTB subfamily of Rho GTPases. For background information on RHOBTBs, see RHOBTB1 (MIM 607351).[supplied by OMIM, Apr 2004],
<b>matters needing attention</b>	Avoid repeated freezing and thawing!

**Nanjing BYabscience technology Co.,Ltd**

网址: [www.njbybio.com](http://www.njbybio.com)

官方热线: 025-5229-8998

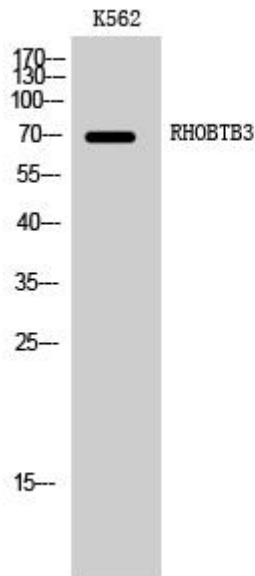
监督电话: 15950492658



### Usage suggestions

This product can be used in immunological reaction related experiments. For more information, please consult technical personnel.

## Products Images



Western Blot analysis of various cells using RHOBTB3 Monoclonal Antibody

Nanjing BYabs science technology Co.,Ltd

网址: [www.njbybio.com](http://www.njbybio.com)

官方热线: 025-5229-8998

监督电话: 15950492658