



Ran BP-6 Monoclonal Antibody

| | |
|---------------------------|---|
| Catalog No | BYmab-16223 |
| Isotype | IgG |
| Reactivity | Human;Mouse;Rat;Monkey |
| Applications | WB |
| Gene Name | RANBP6 |
| Protein Name | Ran-binding protein 6 |
| Immunogen | The antiserum was produced against synthesized peptide derived from human RANBP6. AA range:800-849 |
| Specificity | Ran BP-6 Monoclonal Antibody detects endogenous levels of Ran BP-6 protein. |
| Formulation | Liquid in PBS containing 50% glycerol, 0.5% BSA and 0.02% sodium azide. |
| Source | Monoclonal, Mouse,IgG |
| Purification | The antibody was affinity-purified from mouse antiserum by affinity-chromatography using epitope-specific immunogen. |
| Dilution | WB 1:500-2000 |
| Concentration | 1 mg/ml |
| Purity | ≥90% |
| Storage Stability | -20°C/1 year |
| Synonyms | RANBP6; Ran-binding protein 6; RanBP6 |
| Observed Band | 125kD |
| Cell Pathway | Cytoplasm . Nucleus . |
| Tissue Specificity | Endometrium,Kidney,Placenta, |
| Function | function:May function in nuclear protein import as nuclear transport receptor.,similarity:Belongs to the importin beta family.,similarity:Contains 7 HEAT repeats., |
| Background | function:May function in nuclear protein import as nuclear transport receptor.,similarity:Belongs to the importin beta family.,similarity:Contains 7 HEAT repeats., |
| matters needing attention | Avoid repeated freezing and thawing! |

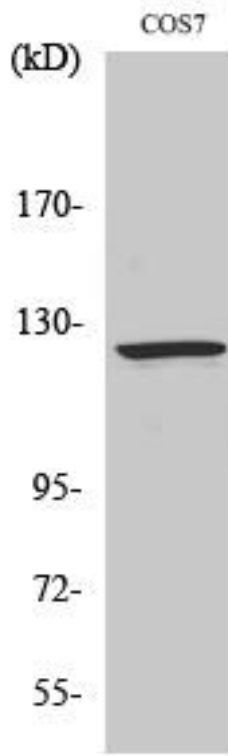
Nanjing BYabscience technology Co.,Ltd



Usage suggestions

This product can be used in immunological reaction related experiments. For more information, please consult technical personnel.

Products Images



Western Blot analysis of various cells using Ran BP-6 Monoclonal Antibody

Nanjing BYabs science technology Co.,Ltd

网址: www.njbybio.com

官方热线: 025-5229-8998

监督电话: 15950492658