



Rad GTPase Monoclonal Antibody

| | |
|--------------------|---|
| Catalog No | BYmab-16217 |
| Isotype | IgG |
| Reactivity | Human;Rat;Mouse; |
| Applications | WB |
| Gene Name | RRAD |
| Protein Name | GTP-binding protein RAD |
| Immunogen | The antiserum was produced against synthesized peptide derived from human RAD. AA range:41-90 |
| Specificity | Rad GTPase Monoclonal Antibody detects endogenous levels of Rad GTPase protein. |
| Formulation | Liquid in PBS containing 50% glycerol, 0.5% BSA and 0.02% sodium azide. |
| Source | Monoclonal, Mouse,IgG |
| Purification | The antibody was affinity-purified from mouse antiserum by affinity-chromatography using epitope-specific immunogen. |
| Dilution | WB 1:500-2000 |
| Concentration | 1 mg/ml |
| Purity | ≥90% |
| Storage Stability | -20°C/1 year |
| Synonyms | RRAD; RAD; GTP-binding protein RAD; RAD1; Ras associated with diabetes |
| Observed Band | 33kD |
| Cell Pathway | Cell membrane . |
| Tissue Specificity | Most abundantly expressed in the heart. Also found in the skeletal muscle and lung. Lesser amounts in placenta and kidney. Also detected in adipose tissue. Overexpressed in muscle of type II diabetic humans. |
| Function | similarity:Belongs to the small GTPase superfamily. RGK family.,subunit:Interacts with calmodulin preferentially to the inactive, GDP-form. Binds CAMKII which is caMABLE of phosphorylating RAD in vitro.,tissue specificity:Skeletal and cardiac muscle, and lung. Lesser amounts in placenta and kidney. Also detected in adipose tissue. Overexpressed in muscle of type II diabetic humans., |
| Background | similarity:Belongs to the small GTPase superfamily. RGK family.,subunit:Interacts with calmodulin preferentially to the inactive, GDP-form. Binds CAMKII which is caMABLE of phosphorylating RAD in vitro.,tissue specificity:Skeletal and cardiac muscle, and lung. Lesser amounts in placenta and kidney. Also detected in |

Nanjing BYabscience technology Co.,Ltd



adipose tissue. Overexpressed in muscle of type II diabetic humans.,

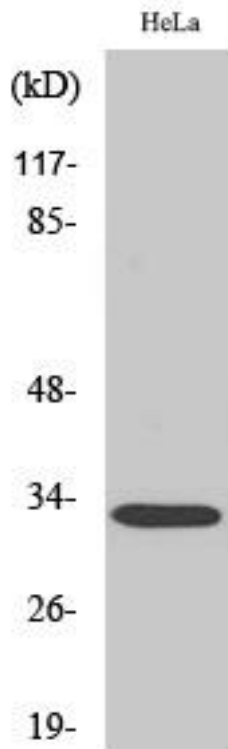
matters needing attention

Avoid repeated freezing and thawing!

Usage suggestions

This product can be used in immunological reaction related experiments. For more information, please consult technical personnel.

Products Images



Western Blot analysis of various cells using Rad GTPase Monoclonal Antibody