



Rab11-FIP2 Monoclonal Antibody

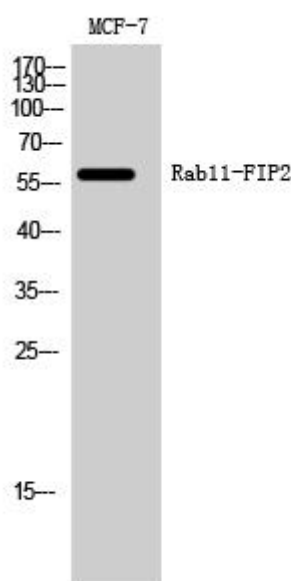
Catalog No	BYmab-16211
Isotype	IgG
Reactivity	Human;Mouse
Applications	WB
Gene Name	RAB11FIP2
Protein Name	Rab11 family-interacting protein 2
Immunogen	The antiserum was produced against synthesized peptide derived from human RAB11FIP2. AA range:340-389
Specificity	Rab11-FIP2 Monoclonal Antibody detects endogenous levels of Rab11-FIP2 protein.
Formulation	Liquid in PBS containing 50% glycerol, 0.5% BSA and 0.02% sodium azide.
Source	Monoclonal, Mouse,IgG
Purification	The antibody was affinity-purified from mouse antiserum by affinity-chromatography using epitope-specific immunogen.
Dilution	WB 1:500-2000
Concentration	1 mg/ml
Purity	≥90%
Storage Stability	-20°C/1 year
Synonyms	RAB11FIP2; KIAA0941; Rab11 family-interacting protein 2; Rab11-FIP2; NRip11
Observed Band	58kD
Cell Pathway	Cell projection, phagocytic cup . Cell membrane; Peripheral membrane protein. Recycling endosome membrane; Peripheral membrane protein. Translocates with RAB11A from the vesicles of the endocytic recycling compartment (ERC) to the plasma membrane.
Tissue Specificity	Brain,
Function	function:A Rab11 effector protein acting in the regulation of the transport of vesicles from the endosomal recycling compartment (ERC) to the plasma membrane. Also involved in receptor-mediated endocytosis and membrane trafficking of recycling endosomes, probably originating from clathrin-coated vesicles. Binds preferentially to phosphatidylinositol 3,4,5-trisphosphate (PtdInsP3) and phosphatidic acid (PA).,similarity:Contains 1 C2 domain.,subcellular location:Translocates with RAB11A from the vesicles of the endocytic recycling compartment (ERC) to the plasma membrane.,subunit:Homooligomerizes in a Rab11-independent manner. Forms

Nanjing BYabscience technology Co.,Ltd



	an heterooligomeric complex with RAB11FIP4. Interacts with AP2A1, MYO5B, RAB11A, RAB11B, RAB25 and REPS1. Interacts with RAB11A/RAB11B that has been activated by GTP binding.,
Background	function:A Rab11 effector protein acting in the regulation of the transport of vesicles from the endosomal recycling compartment (ERC) to the plasma membrane. Also involved in receptor-mediated endocytosis and membrane trafficking of recycling endosomes, probably originating from clathrin-coated vesicles. Binds preferentially to phosphatidylinositol 3,4,5-trisphosphate (PtdInsP3) and phosphatidic acid (PA).,similarity:Contains 1 C2 domain.,subcellular location:Translocates with RAB11A from the vesicles of the endocytic recycling compartment (ERC) to the plasma membrane.,subunit:Homooligomerizes in a Rab11-independent manner. Forms an heterooligomeric complex with RAB11FIP4. Interacts with AP2A1, MYO5B, RAB11A, RAB11B, RAB25 and REPS1. Interacts with RAB11A/RAB11B that has been activated by GTP binding.,
matters needing attention	Avoid repeated freezing and thawing!
Usage suggestions	This product can be used in immunological reaction related experiments. For more information, please consult technical personnel.

Products Images



Western Blot analysis of various cells using Rab11-FIP2 Monoclonal Antibody