



# Rab 6C Monoclonal Antibody

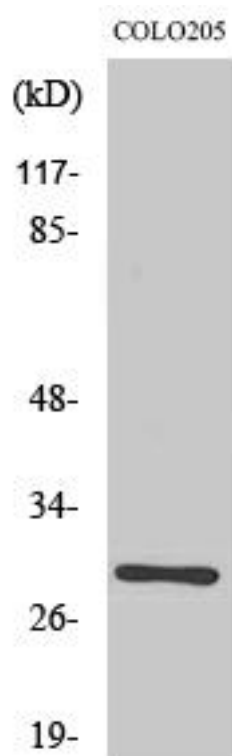
<b>Catalog No</b>	BYmab-16206
<b>Isotype</b>	IgG
<b>Reactivity</b>	Human;Mouse;Rat
<b>Applications</b>	WB
<b>Gene Name</b>	RAB6C
<b>Protein Name</b>	Ras-related protein Rab-6C
<b>Immunogen</b>	The antiserum was produced against synthesized peptide derived from human RAB6C. AA range:165-214
<b>Specificity</b>	Rab 6C Monoclonal Antibody detects endogenous levels of Rab 6C protein.
<b>Formulation</b>	Liquid in PBS containing 50% glycerol, 0.5% BSA and 0.02% sodium azide.
<b>Source</b>	Monoclonal, Mouse,IgG
<b>Purification</b>	The antibody was affinity-purified from mouse antiserum by affinity-chromatography using epitope-specific immunogen.
<b>Dilution</b>	WB 1:500-2000
<b>Concentration</b>	1 mg/ml
<b>Purity</b>	≥90%
<b>Storage Stability</b>	-20°C/1 year
<b>Synonyms</b>	RAB6C; WTH3; Ras-related protein Rab-6C; Rab6-like protein WTH3
<b>Observed Band</b>	28kD
<b>Cell Pathway</b>	Nucleus . Cytoplasm . Cytoplasm, cytoskeleton, microtubule organizing center, centrosome .
<b>Tissue Specificity</b>	Highest levels are found in fetal and adult brain, prostate, testis and spinal cord. Undetectable expression in adrenal gland, skeletal muscle, bone marrow, fetal, and adult liver, heart, salivary gland, and trachea. Detected in the HEK293, HEK293T, LNCaP, MCF-7, T-47D and EVSA-T cell lines (at protein level).
<b>Function</b>	function:Protein transport. Regulator of membrane traffic from the Golgi apparatus towards the endoplasmic reticulum (ER). Has a low GTPase activity.,PTM:Phosphorylated upon DNA damage, probably by ATM or ATR.,similarity:Belongs to the small GTPase superfamily. Rab family.,subunit:Interacts with SCYL1BP1. Interacts with VSP52 and RABGAP1. Isoform 1 interacts with RAB6KIFL but not isoform 2. Isoforms 1 and 2 interact with BICD1 and BICD2. Interacts with TMF1.,tissue specificity:Ubiquitous.,

**Nanjing BYabscience technology Co.,Ltd**



<b>Background</b>	function:Protein transport. Regulator of membrane traffic from the Golgi apparatus towards the endoplasmic reticulum (ER). Has a low GTPase activity.,PTM:Phosphorylated upon DNA damage, probably by ATM or ATR.,similarity:Belongs to the small GTPase superfamily. Rab family.,subunit:Interacts with SCYL1BP1. Interacts with VSP52 and RABGAP1. Isoform 1 interacts with RAB6KIFL but not isoform 2. Isoforms 1 and 2 interact with BICD1 and BICD2. Interacts with TMF1.,tissue specificity:Ubiquitous.,
<b>matters needing attention</b>	Avoid repeated freezing and thawing!
<b>Usage suggestions</b>	This product can be used in immunological reaction related experiments. For more information, please consult technical personnel.

## Products Images



Western Blot analysis of various cells using Rab 6C Monoclonal Antibody