



Rab 6A Monoclonal Antibody

Catalog No	BYmab-16205
Isotype	IgG
Reactivity	Human;Mouse;Rat
Applications	WB
Gene Name	RAB6A
Protein Name	Ras-related protein Rab-6A
Immunogen	The antiserum was produced against synthesized peptide derived from human RAB6A. AA range:113-162
Specificity	Rab 6A Monoclonal Antibody detects endogenous levels of Rab 6A protein.
Formulation	Liquid in PBS containing 50% glycerol, 0.5% BSA and 0.02% sodium azide.
Source	Monoclonal, Mouse,IgG
Purification	The antibody was affinity-purified from mouse antiserum by affinity-chromatography using epitope-specific immunogen.
Dilution	WB 1:500-2000
Concentration	1 mg/ml
Purity	≥90%
Storage Stability	-20°C/1 year
Synonyms	RAB6A; RAB6; Ras-related protein Rab-6A; Rab-6
Observed Band	24kD
Cell Pathway	Golgi apparatus membrane ; Lipid-anchor . BICD2 facilitates its targeting to Golgi apparatus membrane. .; [Isoform 1]: Golgi apparatus membrane ; Lipid-anchor .; [Isoform 2]: Golgi apparatus membrane ; Lipid-anchor .
Tissue Specificity	Ubiquitous.
Function	function:Protein transport. Regulator of membrane traffic from the Golgi apparatus towards the endoplasmic reticulum (ER). Has a low GTPase activity.,PTM:Phosphorylated upon DNA damage, probably by ATM or ATR.,similarity:Belongs to the small GTPase superfamily. Rab family.,subunit:Interacts with SCYL1BP1. Interacts with VSP52 and RABGAP1. Isoform 1 interacts with RAB6KIFL but not isoform 2. Isoforms 1 and 2 interact with BICD1 and BICD2. Interacts with TMF1.,tissue specificity:Ubiquitous.,
Background	This gene encodes a member of the RAB family, which belongs to the small GTPase superfamily. GTPases of the RAB family bind to various effectors to

Nanjing BYabscience technology Co.,Ltd



regulate the targeting and fusion of transport carriers to acceptor compartments. This protein is located at the Golgi apparatus, which regulates trafficking in both a retrograde (from early endosomes and Golgi to the endoplasmic reticulum) and an anterograde (from the Golgi to the plasma membrane) directions. Myosin II is an effector of this protein in these processes. This protein is also involved in assembly of human cytomegalovirus (HCMV) by interacting with the cellular protein Bicaudal D1, which interacts with the HCMV virion tegument protein, pp150. Multiple alternatively spliced transcript variants encoding different isoforms have been identified. [provided by RefSeq, Aug 2011],

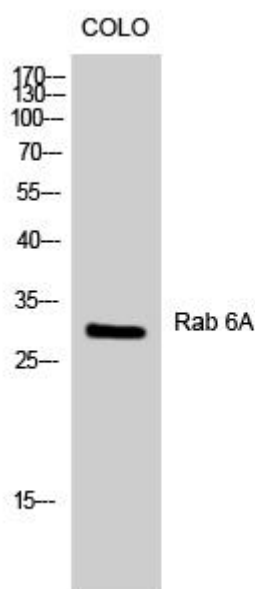
matters needing attention

Avoid repeated freezing and thawing!

Usage suggestions

This product can be used in immunological reaction related experiments. For more information, please consult technical personnel.

Products Images



Western Blot analysis of various cells using Rab 6A Monoclonal Antibody