



Rab 40B Monoclonal Antibody

Catalog No	BYmab-16202
Isotype	IgG
Reactivity	Human;Rat;Mouse;
Applications	WB
Gene Name	RAB40B
Protein Name	Ras-related protein Rab-40B
Immunogen	The antiserum was produced against synthesized peptide derived from human RAB40B. AA range:229-278
Specificity	Rab 40B Monoclonal Antibody detects endogenous levels of Rab 40B protein.
Formulation	Liquid in PBS containing 50% glycerol, 0.5% BSA and 0.02% sodium azide.
Source	Monoclonal, Mouse,IgG
Purification	The antibody was affinity-purified from mouse antiserum by affinity-chromatography using epitope-specific immunogen.
Dilution	WB 1:500-2000
Concentration	1 mg/ml
Purity	≥90%
Storage Stability	-20°C/1 year
Synonyms	RAB40B; SEC4L; Ras-related protein Rab-40B; SOCS box-containing protein RAR; Protein Rar
Observed Band	34kD
Cell Pathway	Cell membrane ; Lipid-anchor ; Cytoplasmic side .
Tissue Specificity	Brain,Hippocampus,
Function	domain:The SOCS box domain mediates the interaction with the Elongin BC complex, an adapter module in different E3 ubiquitin ligase complexes.,function:May be a substrate-recognition component of a SCF-like ECS (Elongin-Cullin-SOCS-box protein) E3 ubiquitin ligase complex which mediates the ubiquitination and subsequent proteasomal degradation of target proteins.,pathway:Protein modification; protein ubiquitination.,similarity:Belongs to the small GTPase superfamily. Rab family.,similarity:Contains 1 SOCS box domain.,

Nanjing BYabscience technology Co.,Ltd

网址: www.njbybio.com

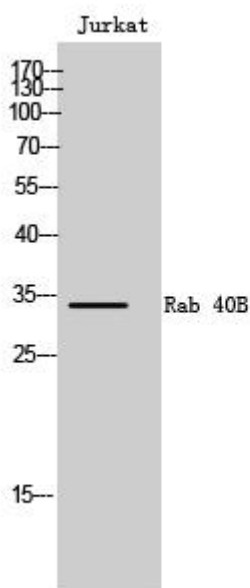
官方热线: 025-5229-8998

监督电话: 15950492658



Background	The protein encoded by this gene has similarity to a yeast protein which suggests a role of the gene product in regulating secretory vesicles. [provided by RefSeq, Jul 2008],
matters needing attention	Avoid repeated freezing and thawing!
Usage suggestions	This product can be used in immunological reaction related experiments. For more information, please consult technical personnel.

Products Images



Western Blot analysis of various cells using Rab 40B Monoclonal Antibody