



Rab 38 Monoclonal Antibody

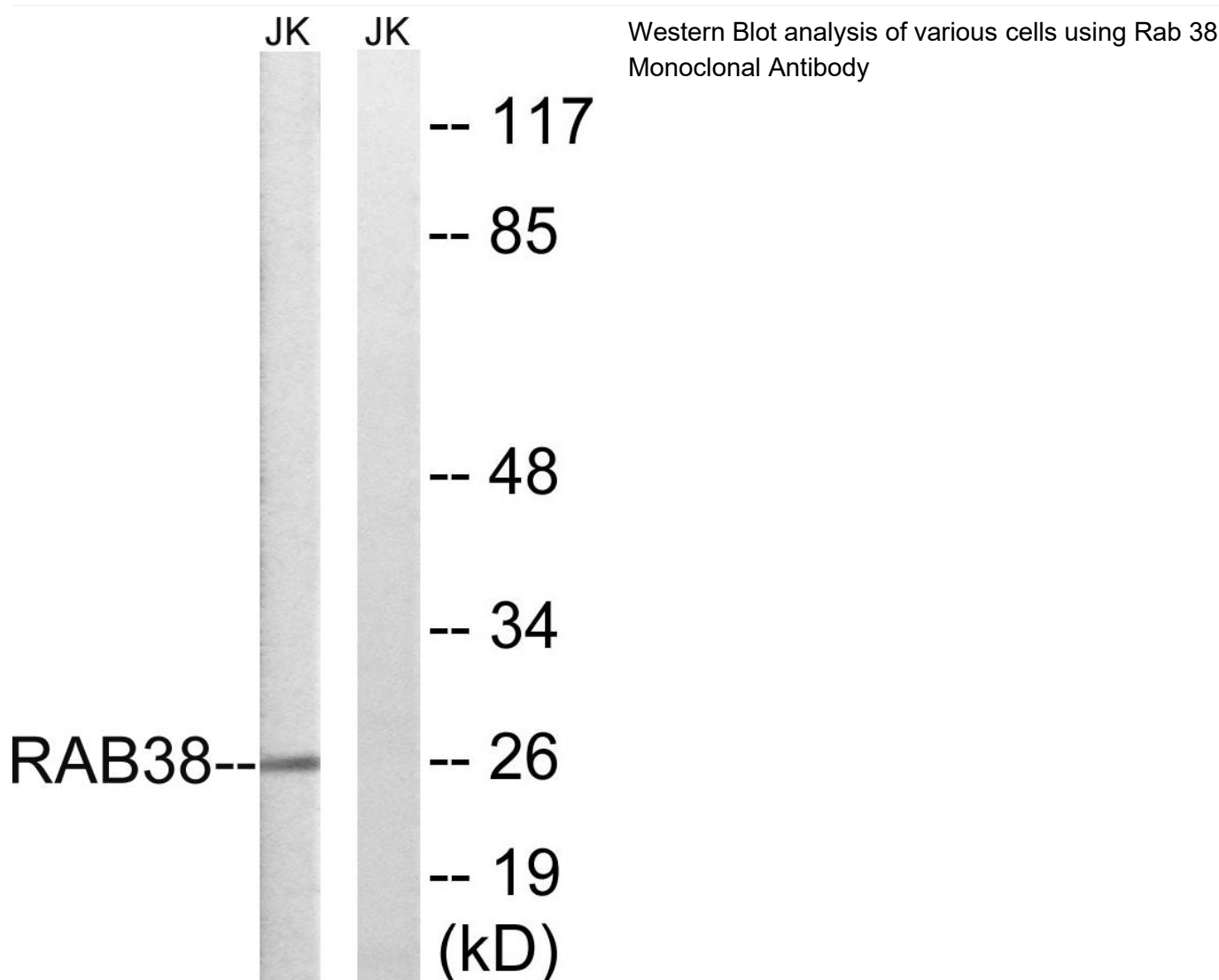
Catalog No	BYmab-16201
Isotype	IgG
Reactivity	Human;Mouse;Rat
Applications	WB
Gene Name	RAB38
Protein Name	Ras-related protein Rab-38
Immunogen	The antiserum was produced against synthesized peptide derived from human RAB38. AA range:80-129
Specificity	Rab 38 Monoclonal Antibody detects endogenous levels of Rab 38 protein.
Formulation	Liquid in PBS containing 50% glycerol, 0.5% BSA and 0.02% sodium azide.
Source	Monoclonal, Mouse,IgG
Purification	The antibody was affinity-purified from mouse antiserum by affinity-chromatography using epitope-specific immunogen.
Dilution	WB 1:500-2000
Concentration	1 mg/ml
Purity	≥90%
Storage Stability	-20°C/1 year
Synonyms	RAB38; Ras-related protein Rab-38; Melanoma antigen NY-MEL-1
Observed Band	26kD
Cell Pathway	Cell membrane ; Lipid-anchor ; Cytoplasmic side . Melanosome . Cytoplasmic vesicle, phagosome . Cytoplasmic vesicle, phagosome membrane ; Lipid-anchor ; Cytoplasmic side . Melanosome membrane . Recruited to phagosomes containing S.aureus or M.tuberculosis (PubMed:21255211). The BLOC-3 complex, a heterodimer of HPS1 and HPS4 promotes its membrane localization (PubMed:23084991). .
Tissue Specificity	Expressed in melanocytes.
Function	function:May be involved in melanosomal transport and docking. Involved in the proper sorting of TYRP1.,PTM:Although at least one in vitro system can process and methylate the prenylated C-terminal, in an in vitro system that normally express Rab-38 and in vivo the prenylated C-terminal is not proteolytically processed and not methylated.,similarity:Belongs to the small GTPase superfamily. Rab family.,tissue specificity:Expressed in melanocytes.,

Nanjing BYabscience technology Co.,Ltd



Background	function:May be involved in melanosomal transport and docking. Involved in the proper sorting of TYRP1.,PTM:Although at least one in vitro system can process and methylate the prenylated C-terminal, in an in vitro system that normally express Rab-38 and in vivo the prenylated C-terminal is not proteolytically processed and not methylated.,similarity:Belongs to the small GTPase superfamily. Rab family.,tissue specificity:Expressed in melanocytes.,
matters needing attention	Avoid repeated freezing and thawing!
Usage suggestions	This product can be used in immunological reaction related experiments. For more information, please consult technical personnel.

Products Images



Nanjing BYabscience technology Co.,Ltd