



Rab 37 Monoclonal Antibody

Catalog No	BYmab-16200
Isotype	IgG
Reactivity	Human;Rat;Mouse;
Applications	WB
Gene Name	RAB37
Protein Name	Ras-related protein Rab-37
Immunogen	The antiserum was produced against synthesized peptide derived from human RAB37. AA range:170-219
Specificity	Rab 37 Monoclonal Antibody detects endogenous levels of Rab 37 protein.
Formulation	Liquid in PBS containing 50% glycerol, 0.5% BSA and 0.02% sodium azide.
Source	Monoclonal, Mouse,IgG
Purification	The antibody was affinity-purified from mouse antiserum by affinity-chromatography using epitope-specific immunogen.
Dilution	WB 1:500-2000
Concentration	1 mg/ml
Purity	≥90%
Storage Stability	-20°C/1 year
Synonyms	RAB37; Ras-related protein Rab-37
Observed Band	26kD
Cell Pathway	Cytoplasmic vesicle. Secretory granules. .
Tissue Specificity	Brain,Platelet,Prostate,Thalamus,Thymus,Trachea,
Function	similarity:Belongs to the small GTPase superfamily. Rab family.,subcellular location:Secretory granules.,
Background	Rab proteins are low molecular mass GTPases that are critical regulators of vesicle trafficking. For additional background information on Rab proteins, see MIM 179508.[supplied by OMIM, Apr 2006],
matters needing attention	Avoid repeated freezing and thawing!

Nanjing BYabscience technology Co.,Ltd

网址: www.njbybio.com

官方热线: 025-5229-8998

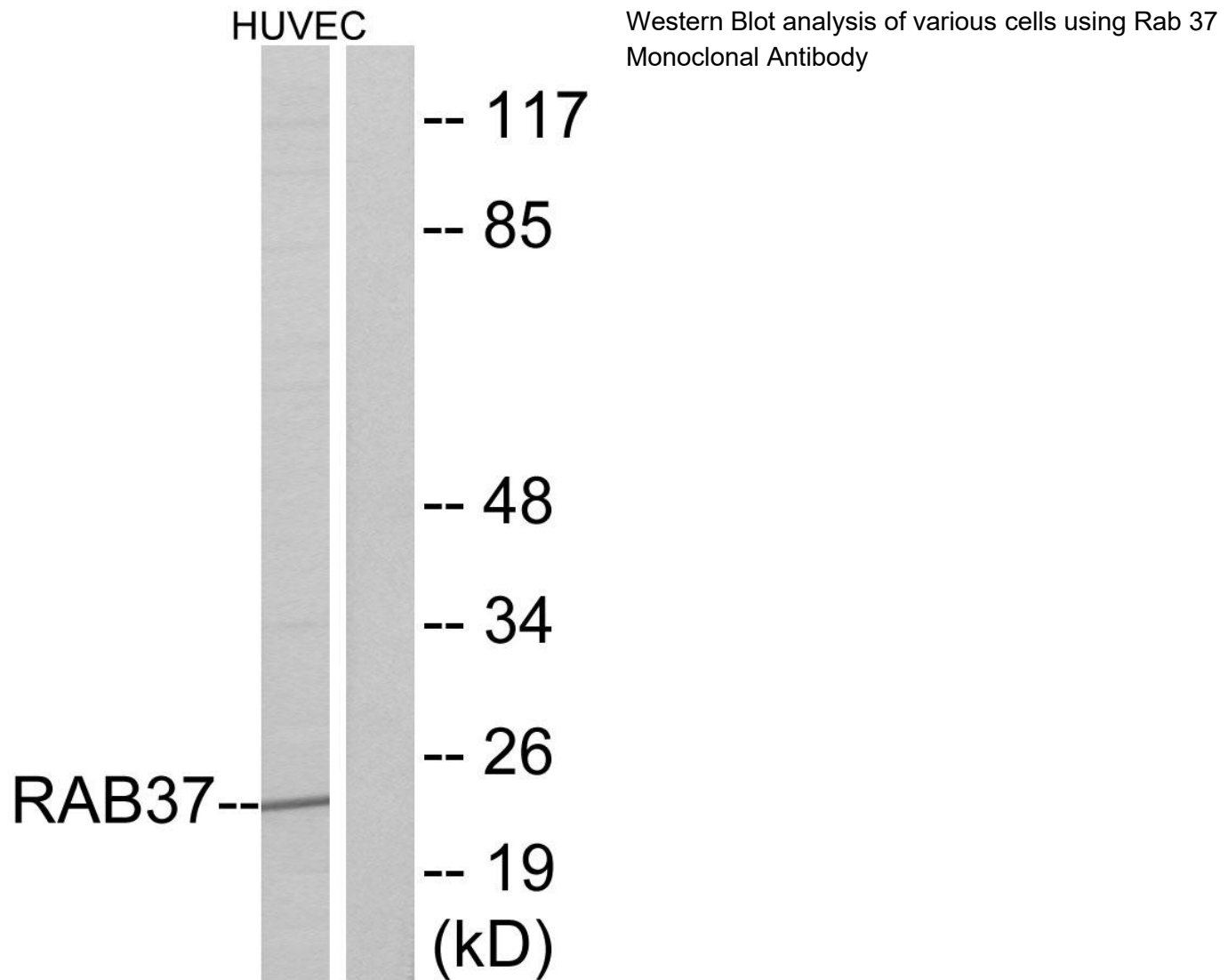
监督电话: 15950492658



Usage suggestions

This product can be used in immunological reaction related experiments. For more information, please consult technical personnel.

Products Images



Nanjing BYabs science technology Co.,Ltd

网址: www.njbybio.com

官方热线: 025-5229-8998

监督电话: 15950492658