



# Rab 35 Monoclonal Antibody

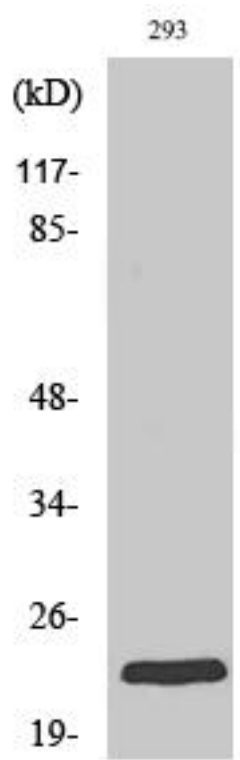
Catalog No	BYmab-16199
Isotype	IgG
Reactivity	Human;Mouse;Rat
Applications	WB
Gene Name	RAB35
Protein Name	Ras-related protein Rab-35
Immunogen	The antiserum was produced against synthesized peptide derived from human RAB35. AA range:99-148
Specificity	Rab 35 Monoclonal Antibody detects endogenous levels of Rab 35 protein.
Formulation	Liquid in PBS containing 50% glycerol, 0.5% BSA and 0.02% sodium azide.
Source	Monoclonal, Mouse,IgG
Purification	The antibody was affinity-purified from mouse antiserum by affinity-chromatography using epitope-specific immunogen.
Dilution	WB 1:500-2000
Concentration	1 mg/ml
Purity	≥90%
Storage Stability	-20°C/1 year
Synonyms	RAB35; RAB1C; RAY; Ras-related protein Rab-35; GTP-binding protein RAY; Ras-related protein Rab-1C
Observed Band	24kD
Cell Pathway	Cell membrane ; Lipid-anchor ; Cytoplasmic side . Membrane, clathrin-coated pit . Cytoplasmic vesicle, clathrin-coated vesicle . Endosome . Melanosome . Present on sorting endosomes and recycling endosome tubules (PubMed:16950109). Tends to be enriched in PIP2-positive cell membrane domains (PubMed:16950109). During mitosis, associated with the plasma membrane and present at the ingressing furrow during early cytokinesis as well as at the intercellular bridge later during cytokinesis (PubMed:16950109). Identified in stage I to stage IV melanosomes (PubMed:17081065). .
Tissue Specificity	Brain,Muscle,Uterus,
Function	function:Possesses GTPase activity.,similarity:Belongs to the small GTPase superfamily. Rab family.,subcellular location:Identified by mass spectrometry in melanosome fractions from stage I to stage IV.,

Nanjing BYabscience technology Co.,Ltd



<b>Background</b>	function: Possesses GTPase activity., similarity: Belongs to the small GTPase superfamily. Rab family., subcellular location: Identified by mass spectrometry in melanosome fractions from stage I to stage IV.,
<b>matters needing attention</b>	Avoid repeated freezing and thawing!
<b>Usage suggestions</b>	This product can be used in immunological reaction related experiments. For more information, please consult technical personnel.

## Products Images



Western Blot analysis of various cells using Rab 35 Monoclonal Antibody