



Rab 33A Monoclonal Antibody

Catalog No	BYmab-16197
Isotype	IgG
Reactivity	Human;Mouse;Rat
Applications	WB
Gene Name	RAB33A
Protein Name	Ras-related protein Rab-33A
Immunogen	The antiserum was produced against synthesized peptide derived from human RAB33A. AA range:132-181
Specificity	Rab 33A Monoclonal Antibody detects endogenous levels of Rab 33A protein.
Formulation	Liquid in PBS containing 50% glycerol, 0.5% BSA and 0.02% sodium azide.
Source	Monoclonal, Mouse,IgG
Purification	The antibody was affinity-purified from mouse antiserum by affinity-chromatography using epitope-specific immunogen.
Dilution	WB 1:500-2000
Concentration	1 mg/ml
Purity	≥90%
Storage Stability	-20°C/1 year
Synonyms	RAB33A; RABS10; Ras-related protein Rab-33A; Small GTP-binding protein S10
Observed Band	27kD
Cell Pathway	Cell membrane ; Lipid-anchor ; Cytoplasmic side .
Tissue Specificity	Expressed only in lymphoid cell lines.
Function	similarity:Belongs to the small GTPase superfamily. Rab family.,tissue specificity:Expressed only in lymphoid cell lines.,
Background	The protein encoded by this gene belongs to the small GTPase superfamily, Rab family. It is GTP-binding protein and may be involved in vesicle transport. [provided by RefSeq, Jul 2008],
matters needing attention	Avoid repeated freezing and thawing!

Nanjing BYabscience technology Co.,Ltd

网址: www.njbybio.com

官方热线: 025-5229-8998

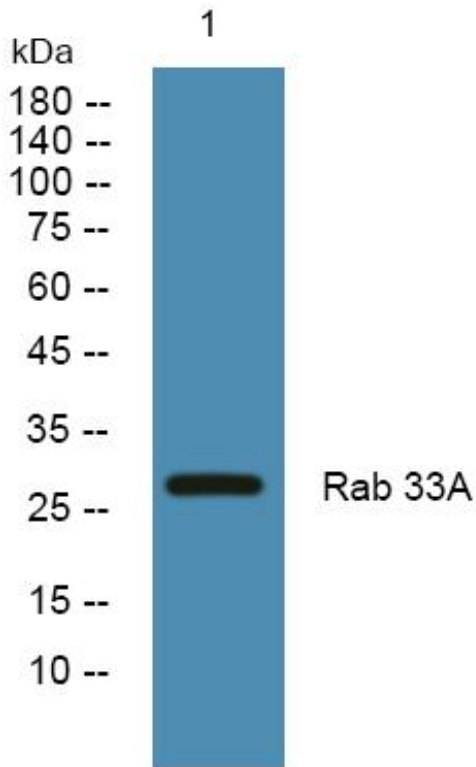
监督电话: 15950492658



Usage suggestions

This product can be used in immunological reaction related experiments. For more information, please consult technical personnel.

Products Images



Western Blot analysis of various cells using Rab 33A Monoclonal Antibody

Nanjing BYabs science technology Co.,Ltd

网址: www.njbybio.com

官方热线: 025-5229-8998

监督电话: 15950492658