



Rab 18 Monoclonal Antibody

Catalog No	BYmab-16188
Isotype	IgG
Reactivity	Human;Mouse;Rat
Applications	WB
Gene Name	RAB18
Protein Name	Ras-related protein Rab-18
Immunogen	The antiserum was produced against synthesized peptide derived from human RAB18. AA range:103-152
Specificity	Rab 18 Monoclonal Antibody detects endogenous levels of Rab 18 protein.
Formulation	Liquid in PBS containing 50% glycerol, 0.5% BSA and 0.02% sodium azide.
Source	Monoclonal, Mouse,IgG
Purification	The antibody was affinity-purified from mouse antiserum by affinity-chromatography using epitope-specific immunogen.
Dilution	WB 1:500-2000
Concentration	1 mg/ml
Purity	≥90%
Storage Stability	-20°C/1 year
Synonyms	RAB18; Ras-related protein Rab-18
Observed Band	28kD
Cell Pathway	Apical cell membrane . Lipid droplet .
Tissue Specificity	Ubiquitous.
Function	function:Plays a role in apical endocytosis/recycling. May be implicated in transport between the plasma membrane and early endosomes.,similarity:Belongs to the small GTPase superfamily. Rab family.,tissue specificity:Ubiquitous.,
Background	The protein encoded by this gene is a member of a family of Ras-related small GTPases that regulate membrane trafficking in organelles and transport vesicles. Knockdown studies in zebrafish suggest that this protein may have a role in eye and brain development. Mutations in this gene are associated with Warburg micro syndrome type 3. Alternatively spliced transcript variants have been found for this gene. [provided by RefSeq, Jan 2012],

Nanjing BYabscience technology Co.,Ltd



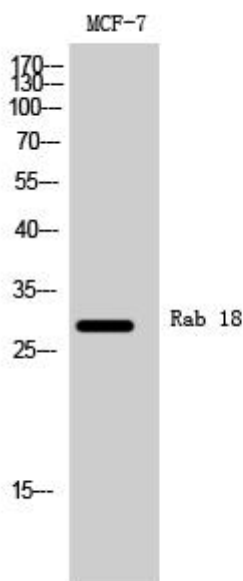
matters needing attention

Avoid repeated freezing and thawing!

Usage suggestions

This product can be used in immunological reaction related experiments. For more information, please consult technical personnel.

Products Images



Western Blot analysis of various cells using Rab 18 Monoclonal Antibody